

Collezione

LEVANTE

GRES PORCELLANATO





LEVANTE

GRES PORCELLANATO

Una pietra segnata dalla mano del tempo, dal calore di mondi stranieri e dalla passione di genti lontane per "Levante", nuovo concept modulare, seducente ed armonioso. Mix di 4 formati, esagona e mattoncino interpretano gli spazi con carattere, versatilità e tradizione. Gres porcellanato smaltato per ambienti residenziali e commerciali raffinati, esclusivi e decorativi.

"Levante" is a stone time scarred, marked by foreigner world's warmth and by far away people, a new pleasant, seductive and modular concept. Mix of 4 sizes, hexagon and brick perform living spaces with character, versatility and tradition. Glazed porcelain for exclusive and refined high-end commercial and residential livings.



LUNA

PIETRA

GRAFITE

DESERTO

48x96 - 19"x38"

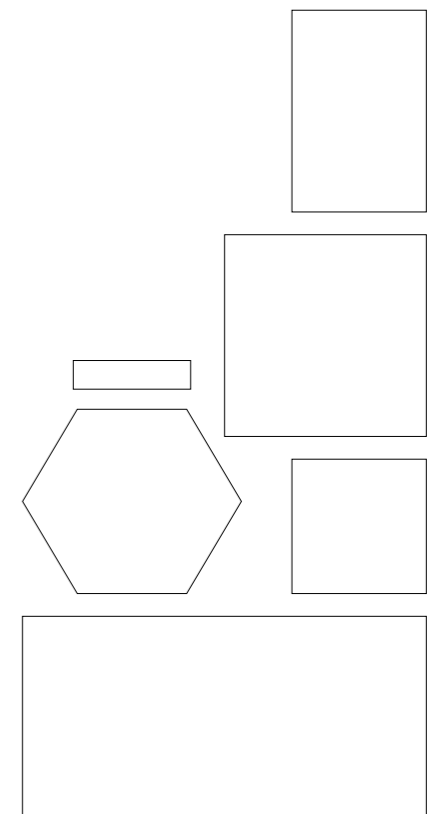
48x48 - 19"x19"

32x48 - 13"x19"

32x32 - 13"x13"

Esagona 40,9x47,2 - 16"x19"

Brick 7,5x30 - 3"x12"

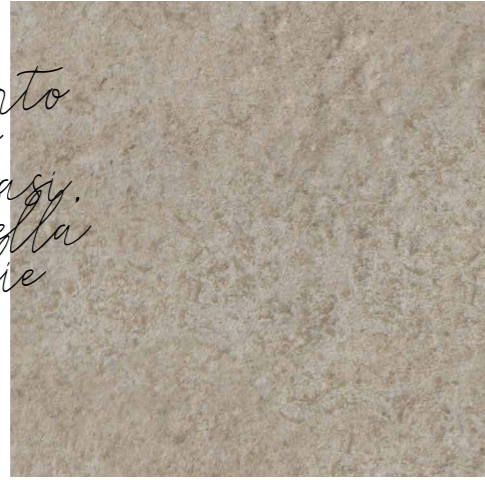


Une pierre marquée par la main du temps, la chaleur des mondes étrangers et la passion des gens lointains pour "Levante", un nouveau concept modulaire, séduisant et harmonieux. Mélange de 4 formats, hexagone et brique interprètent les espaces avec caractère, polyvalence et tradition. Grès cérame émaillé pour des environnements résidentiels et espaces publics raffinés, exclusifs et décoratifs.

Eine Natursteinoptik, gezeichnet und geformt von den Händen der Zeit. Mit der Wärme fremder Länder und der Leidenschaft ferner Menschen für "LEVANTE", ein neues modulares Projekt, verführerisch und doch harmonisch. Module mit 4 Formaten, Sechseck und Riemchen kleiden die Räume mit Charakter, Vielseitigkeit und Tradition. Glasiertes Feinsteinzeug für Wohnbereiche und raffinierte, exklusive und dekorative Geschäftsräume.

"Levante" камень помеченный временем, теплом иноземных миров и далёких народов, новая гармоничная и привлекательная модульная концепция. 4 формата для модульной кладки, шестиугольник и «кирпичик» придают характер и стиль любому помещению. Глазурованный керамогранит для эксклюзивных и изысканных жилых и коммерческих пространств.

*Onde del deserto
ti avvolgono
in un mare d'oasi.
dove il tepore della
sabbia accoglie
l'anima
e la mente*



DESE
RTO
O



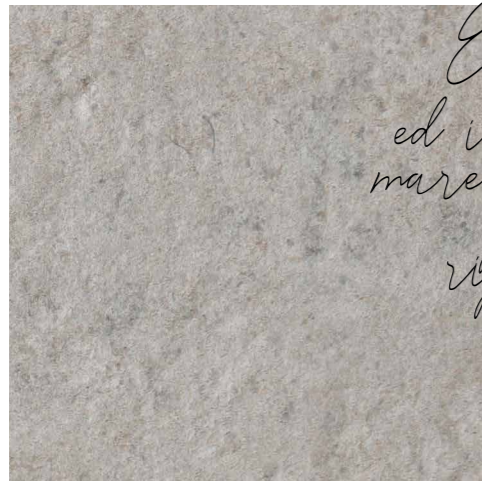
SCHEMA 4C

- DESERTO 48x96
- DESERTO 48x48
- DESERTO 32x48
- DESERTO 32x32



DESERTO 48x96
DESERTO 48x48
DESERTO 32x48
DESERTO 32x32

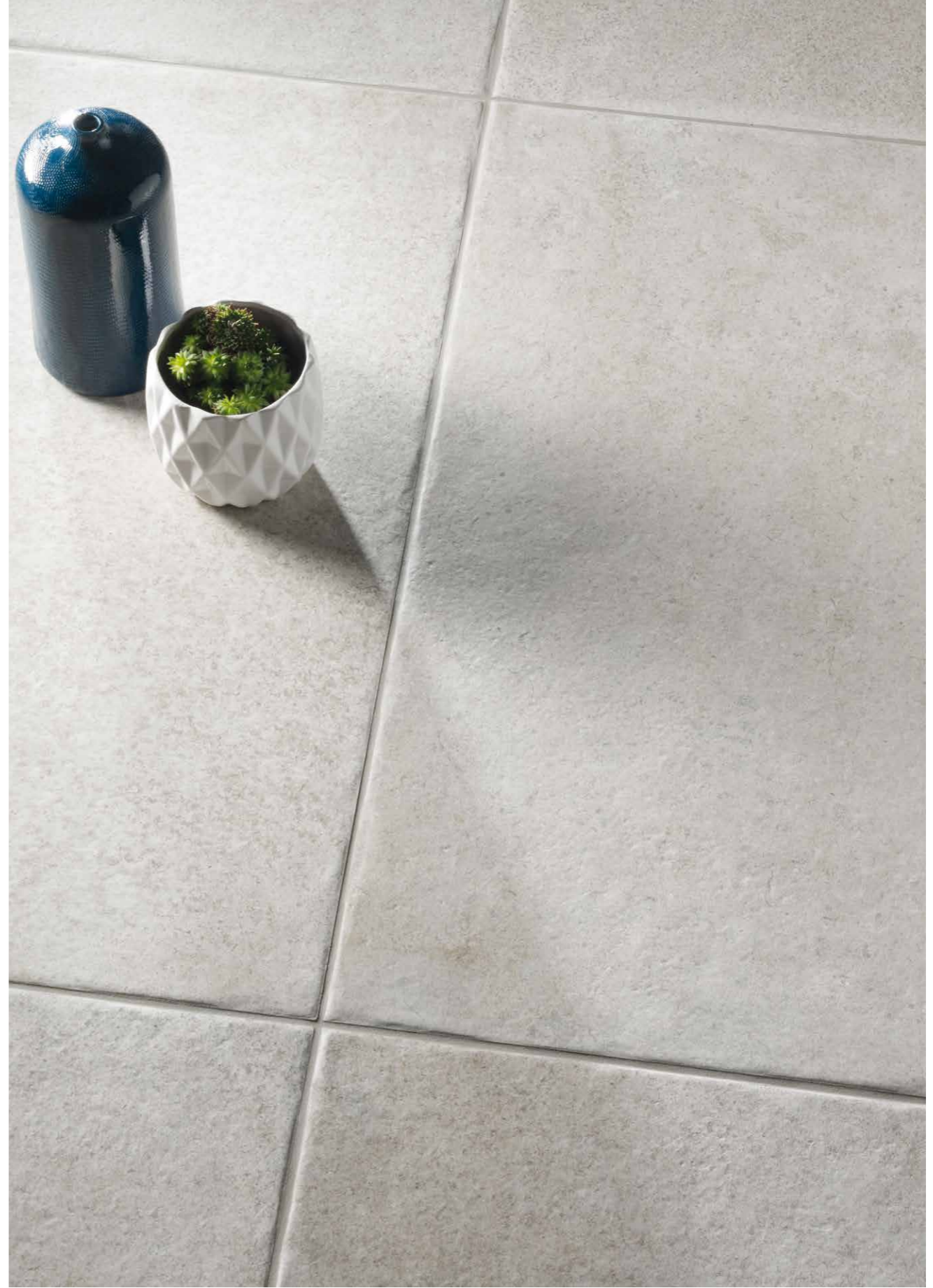
SCHEMA 4C



*Ecco la luna
nuova
ed io su un enorme
mare che silenzioso e
placido mi
riposa ai piedi*



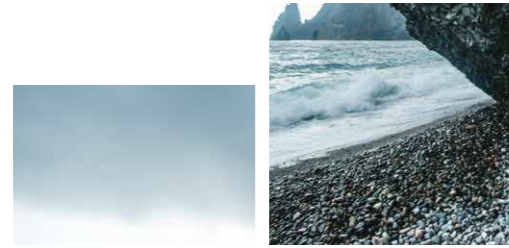
**LU
NA**





11 LEVANTE

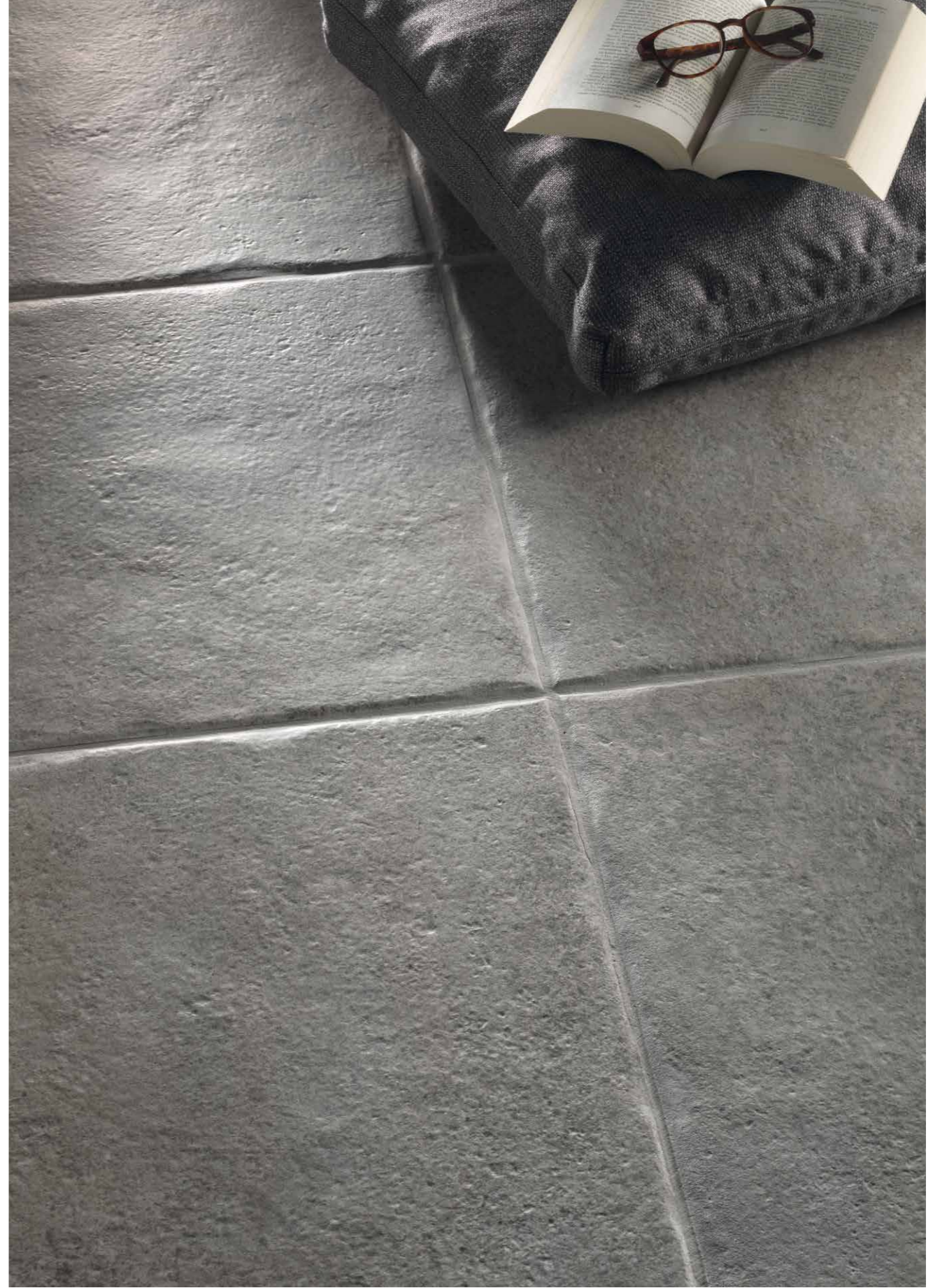
LUNA 48x96
RIV: BRICK LUNA 7,5x30

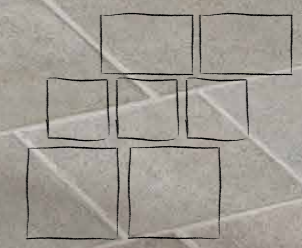


*Nel segno scuro
dell'anima di
grafite, riposa
la dolcezza di
un'eleganza
senza tempo*



GRA
FI
TE





15 LEVANTE

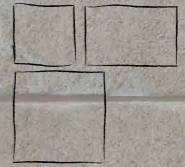
GRAFITE 48x48
GRAFITE 32x48
GRAFITE 32x32

SCHEMA 3P

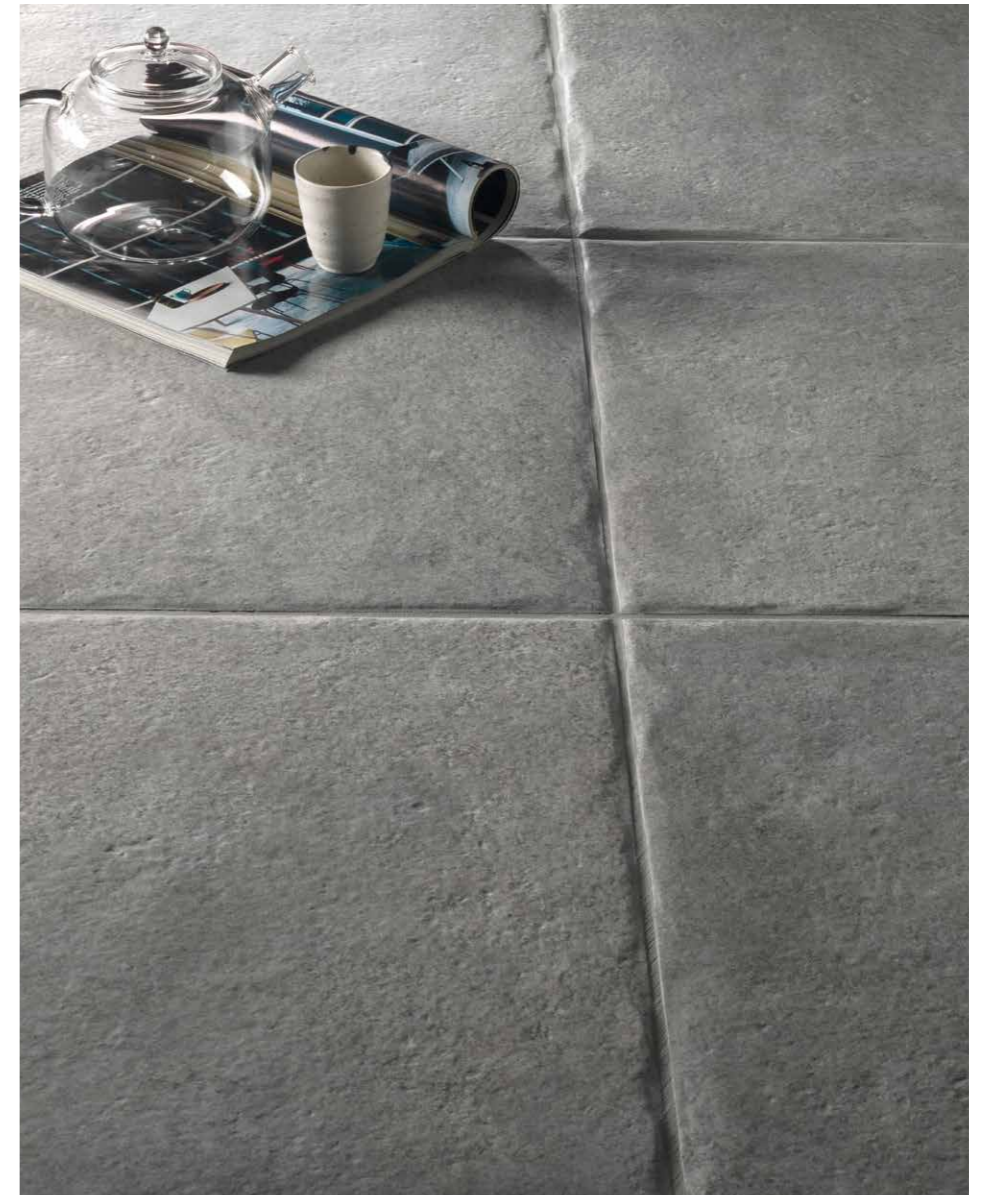
*Ogni mille anni le
pietre respirano e ci
raccontano
di mondi remoti,
levigati e protetti
dalle carezze del
mare*



PIE
T
RA



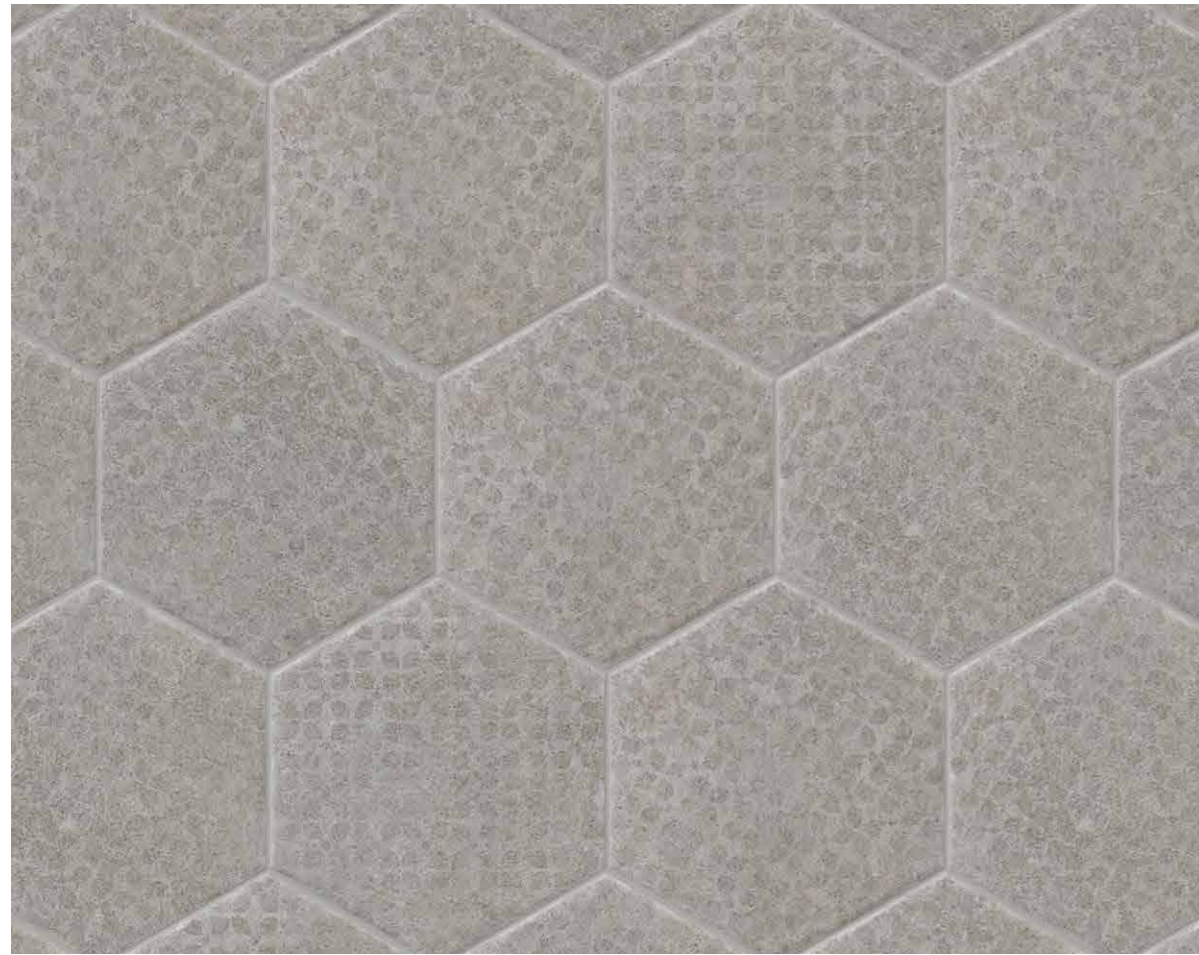
SCHEMA 3S



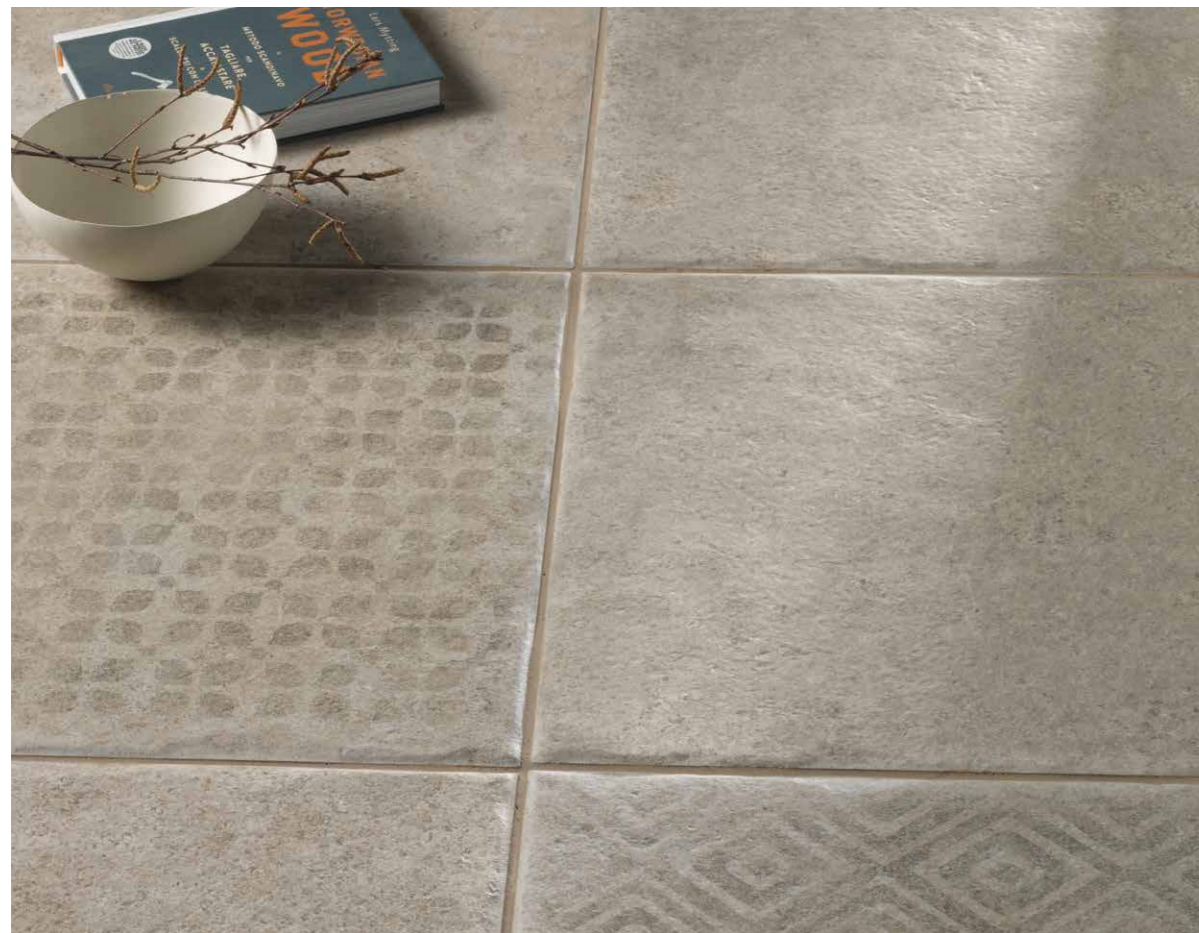
PIETRA 48x48

- PIETRA 48x48
- PIETRA 32x48
- PIETRA 32x32
- *Traces* BIANCO 7x28





DECORO ESAGONA PIETRA 40,9x47,2



DECORO DESERTO A 48x48 . DECORO DESERTO B 48x48 . DESERTO 48x48



ESAGONA PIETRA 40,9x47,2

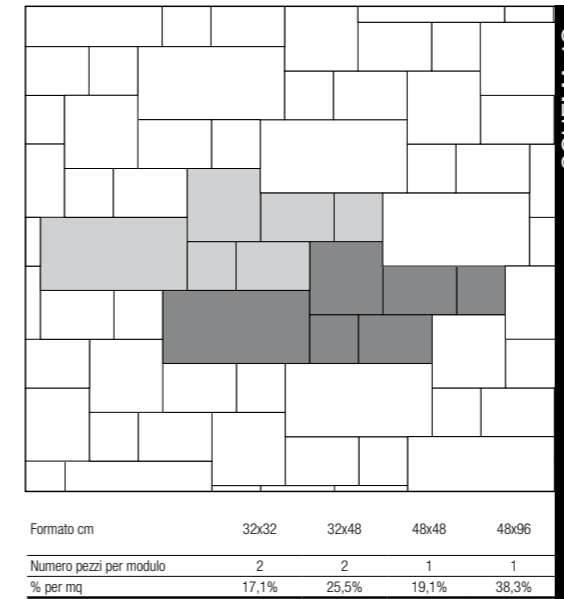


BRICK LUNA 7,5x30

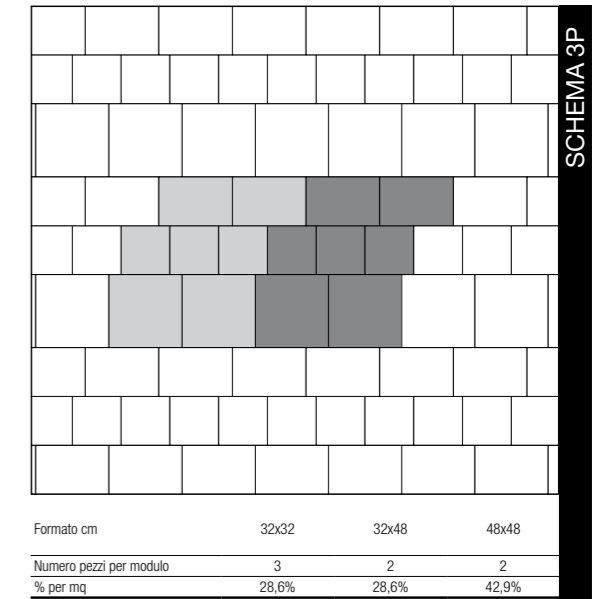
Schemi di Posa

Laying Solutions . Verlegeschemata . Solution de Pose

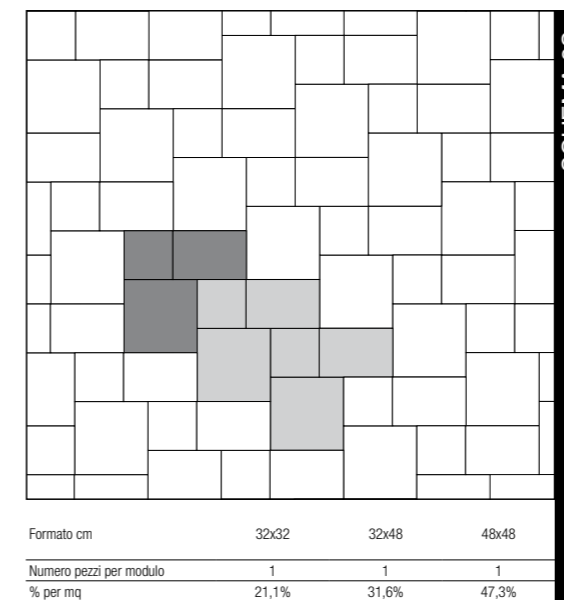
DESERTO: pag. 5 / 6 / 7



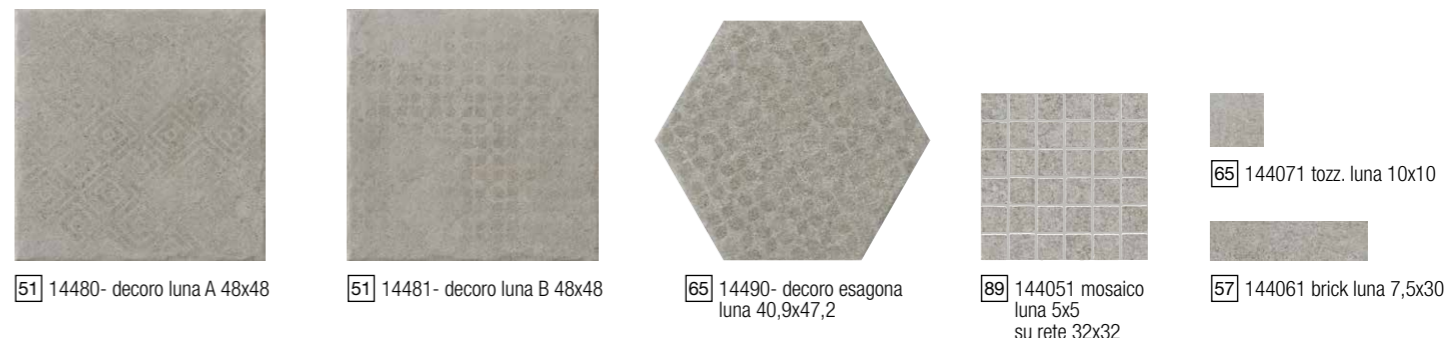
GRAFITE: pag. 14 / 15



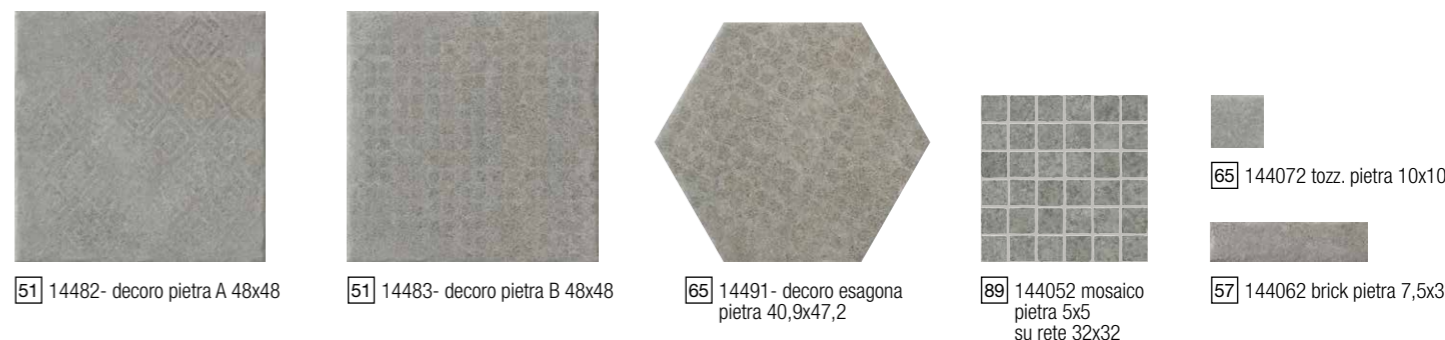
PIETRA: pag. 17 / 18



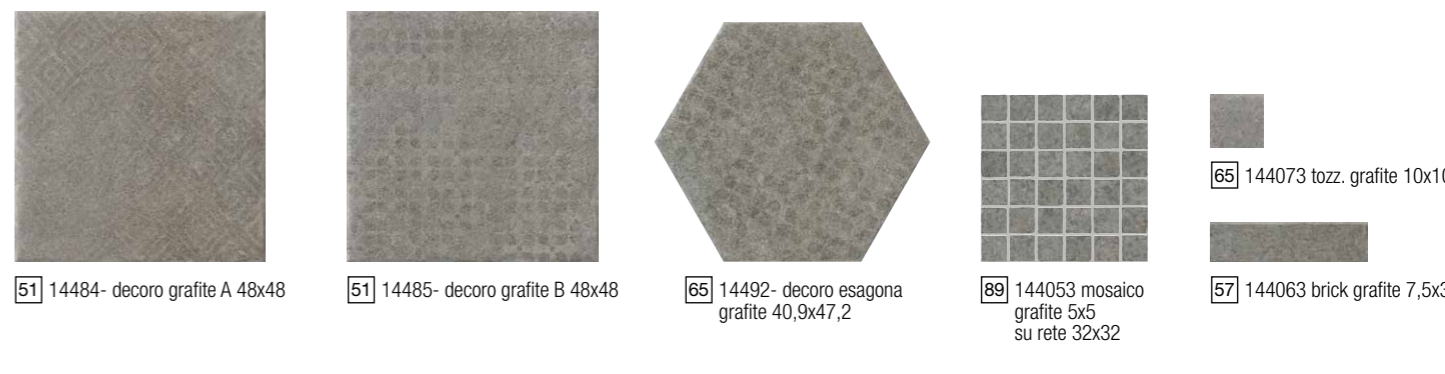
LUNA



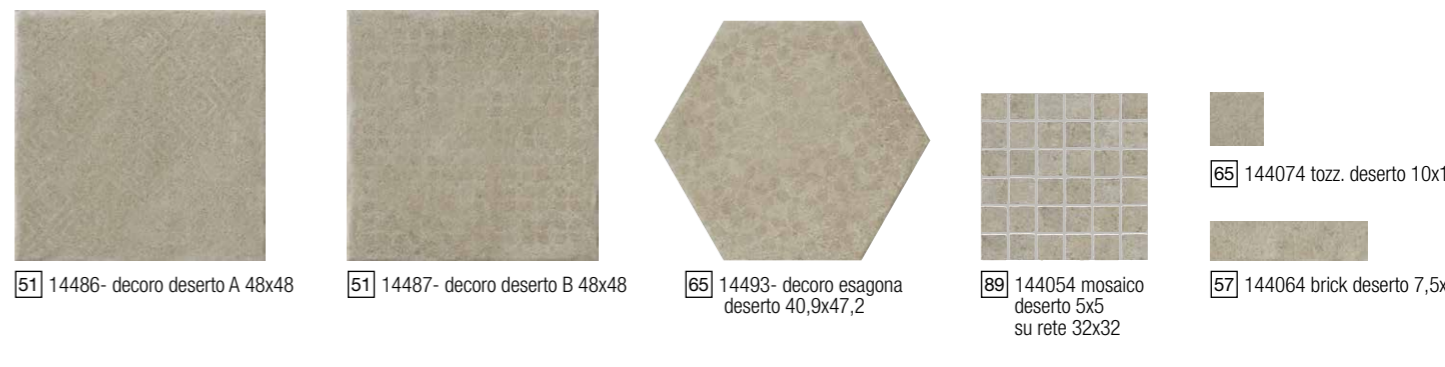
PIETRA



GRAFITE



DESERTO



Pezzi Speciali

Trims . Pièces Spéciales . Formstücke . Специальные изделия



Caratteristiche tecniche
 Technical features . Caracteristiques techniques
 Technische Eigenschaften . Технические характеристики
UNI EN ISO 14411 Bla A. G GL

Metodo di prova
Testing method
Teste d'essai
Pruefmethode
Методика испытаний

Valore
Value
Valeur
Wert
Величина








	Assorbimento acqua Water absorption Absorption d'eau Wasseraufnahme Водопоглощение	ISO 10545.3	< 0,5 %
	Resistenza alla flessione Bending strength Résistance à la flexion Biegezugfestigkeit Стойкость к изгибу	ISO 10545.4	Conforme
	Resistenza all'attacco chimico Chemical resistance Résistance à l'attaque chimique Beständigkeit gegen Chemikalien Стойкость к химическому воздействию	ISO 10545.13	A
	Resistenza alle macchie Stain resistance Résistance aux taches Fleckenbeständigkeit Стойкость к образованию пятен	ISO 10545.14	5
	Anti scivolosità Anti-slip index Coéfficient anti-dérapage Trittsicherheitskoeffizient Характеристики устойчивости к скольжению	DIN 51130 DIN 51097 ANSI A 137.1:2012	Naturale R9 A Grip R11 A+B >0,42 wet >0,42 wet
	Resistenza all'abrasione Resistance to abrasion Résistance à l'abrasion Abriebhärte Стойкость к истиранию	ISO 10545.7	PEI V
	Determinazione della resistenza al gelo Frost resistance index Coefficient de résistance au gel Feststellung der Frostbeständigkeit Определение морозостойкости	ISO 10545.12	Ingelivo. Frost proof Ingelif. Frostsicher. Морозостойкая.

Tabella imballi

Packaging . Emballages
 Verpackungen . Упаковка

	Mq x Scat.	Pz x Scat.	Kg x Scat.	Mq x Pall.	Scat. x Pall	Kg x Pall.
Fondi 48x96	0,93	2	21,14	30,060	42	888,00
Fondi 48x48	1,38	6	30,70	33,120	24	736,80
Fondi 32x48	1,23	8	27,40	44,280	36	986,40
Fondi 32x32	1,23	12	27,40	51,660	42	1150,80
Esagona 40,9x47,2	1,16	8	22,04	25,280	19	480,32
Tozzetto Burattato 10x10	0,84	84	18,70	52,920	63	1178,10
Brick 7,5x30	0,45	20	9,64	32,400	72	694,10
Mosaico 5x5 su rete 32x32	0,92	9	20,50	47,840	52	1066,00
Decoro 48x48	1,38	6	30,70	33,120	24	736,80
Decoro Esagona 40,9x47,2	1,16	8	22,04	25,280	19	480,32
Battiscopa 7,8x48	5,76 ML	12	10,24			
London 5x10		30	2,75			
Racc. Est. London 5x2	sfuso					
Bombato 2x10		60	2,20			
Coprispigo 5x10		30	2,75			
Racc. Est. Copribordo 5x5	sfuso					
Quarter round 1,2x23		20	0,80			
Torello Gradino con rete 5x32		8	4,20			
Torello Angolare con rete 5x32		4 (CP)	4,20			

SETTECENTO
 mosaici e ceramiche d'arte



Ceramics of Italy

Ceramiche 'Settecento Valtresinaro
 Via del Crociale, 21 - 41042 Fiorano Modenese (MO)
 Tel. +39 0536 928711 - Fax +39 0536 928718
 www.settecento.com - e-mail: info@settecento.com