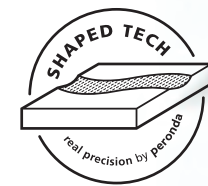


downtown

porcelain and wall tiles



PORCELAIN 4D
PORCELAIN
WALL TILE

Shaped
 Shaped | Soft | Antislip
 Shaped

100 x 180 cm | 100 x 100 cm
 90 x 90 cm | 60 x 120 cm | 60 x 60 cm
 33,3 x 100 cm



downtown porcelain



DOWNTOWN FLOOR 60x120 SP Anthracite



downtown 4D porcelain



DOWNTOWN 4D 100x180 SP White



DOWNTOWN FLOOR 90x90 A White



downtown 4D porcelain



DOWNTOWN 4D 100x180 SP Grey



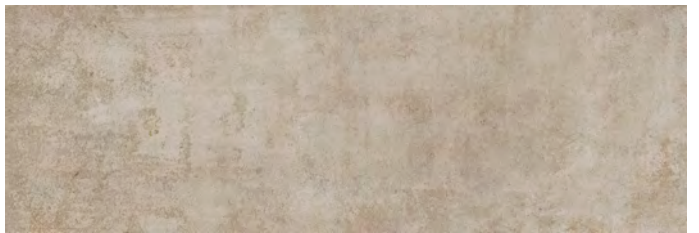
DOWNTOWN 4D 100x100 SP Grey



downtown 4D porcelain



DOWNTOWN 4D 100x100 SP Grey



DOWNTOWN WALL 33,3x100 SP Beige



DOWNTOWN WALL 33,3x100 SP Beige Material



DOWNTOWN FLOOR 90x90 SP Beige

downtown porcelain & wall tiles

LENK 19,5x121,5 AS Walnut



DOWNTOWN WALL 33,3x100 SP Grey Triangle



DOWNTOWN WALL 33,3x100 SP Grey



DOWNTOWN FLOOR 60x60 SF Grey

downtown porcelain & wall tiles

DOWNTOWN White



DOWNTOWN Beige

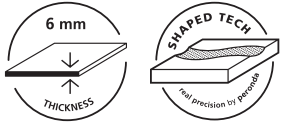


DOWNTOWN Grey



DOWNTOWN Anthracite

downtown 4D Porcelain

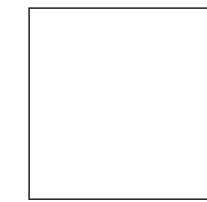


DOWNTOWN 4D



100 * 180 * 0,6 cm | 39 * 71"

RECTIFIED	SHAPED	
	BN137	BN138
ANTHRACITE	31345	
BEIGE	31346	
GREY	31348	
WHITE		31347

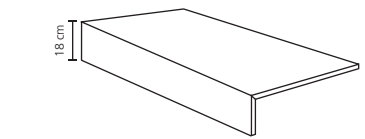


100 * 100 * 0,6 cm | 39 * 39"

RECTIFIED	SHAPED	
	BN135	BN136
ANTHRACITE	31012	
BEIGE	31013	
GREY	31014	
WHITE		31015

NEW PIEZA COMPLEMENTARIA COMPLEMENTARY PIECE

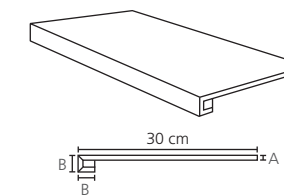
Peldaño técnico Technical stair - thread **P. /18**



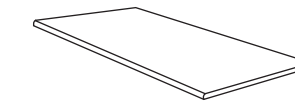
30 * 100 cm | 12 * 39" P74

PIEZA COMPLEMENTARIA | COMPLEMENTARY PIECE

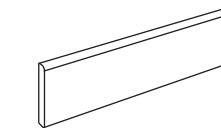
Peldaño técnico Technical stair - thread	P.	Peldaño romo Rounded stair - thread	R.P	Rodapie Skirting	R.	*S.K.I.	*S.K.D.	*Z.R.I.	*Z.R.D.
---	----	--	-----	---------------------	----	---------	---------	---------	---------



30 * 100 cm | 12 * 39" P74
A= 0,6 cm B= 1,8 cm



30 * 100 cm | 12 * 39" P85



8 * 100 cm / SP | 3 * 39" P45



8 * 30 cm | 3*12" P53

CARACTERÍSTICAS TÉCNICAS ANTIDESLIZAMIENTO | ANTI-SLIP CHARACTERISTICS

Ensayo Essay	Características Features	Resultado Result
UNE-ENV 12633	Antideslizamiento (Test del péndulo) Slip resistance (Pendulum test)	Class 1
ANSI A137.1	Coeficiente de Fricción Dinámico Dynamic Coefficient of Friction (DCOF)	> 0,42
ISO 10545-6	Resistencia a la abrasión profunda/ Resistance to Deep Abrasion	< 175 mm ³

CARACTERÍSTICAS TÉCNICAS | TECHNICAL CHARACTERISTICS

joint	frost proof	versatile	matt	full body	diferent shades	shade variation	various graphics	thickness

EMBALAJE | PACKING

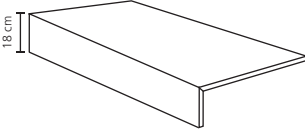
(Los pesos aquí reflejados pueden sufrir ligeras variaciones en función del lote de producción. Weights shown here may slightly vary depending on the production lot.)

Formato Sizes	Cajas Boxes			Pallet (p.)			Tamaño cm aprox.	Cont./20' 21500 kg.	Cont./20' 24000 kg.
	Piezas	m ² /sq.m	kg	Cajas	m ² /sq.m	kg			
cm									
180 * 100 * 0,6	2	3,6	52,75	24	86,4	1316	190 * 115 * 60 (17 p.)	1412	1469
100 * 100 * 0,6	2	2	27,8	40	80	1154	112 * 112 * 85 (20 p.)	1490	1600
inch	units	ft ²	lb	Boxes	ft ²	lb	Sizes Inch approx.	ft ²	ft ²
70 7/8 * 39 3/8 * 1/4	2	38,7	116,29	24	930	2.901,28	74 3/4 * 45 1/4 * 23 5/8 (17 p.)	15.198,64	15812,18
39 3/8 * 39 3/8 * 1/4	2	21,52	61,29	40	516,66	2.544,13	44 3/8 * 44 1/4 * 33 1/2 (20 p.)	16.038,23	17.222,26

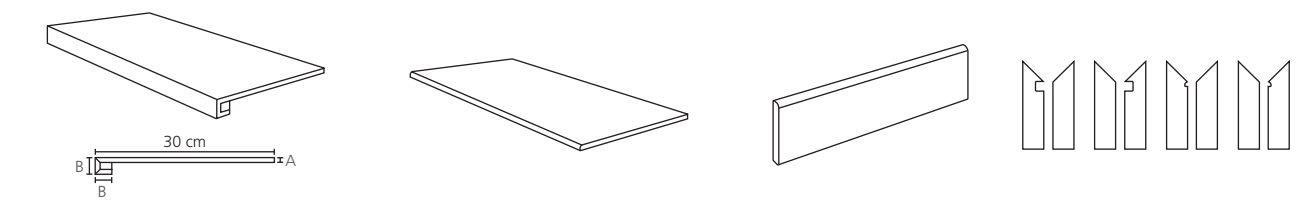


PIEZA COMPLEMENTARIA | COMPLEMENTARY PIECE

Peldaño técnico - Technical stair - thread	P. /18	NEW
--	---------------	------------

	30 * 60 cm 12 * 24" P54 30 * 90 cm 12 * 36" P76 30 * 120 cm 12 * 48" P75
---	--

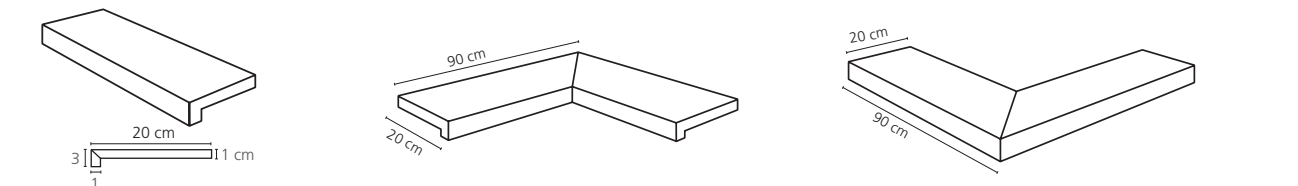
Peldaño técnico Technical stair - thread	P.	Peldaño romo Rounded stair - thread	R.P.	Rodapie Skirting	R.	*S.K.I.	*S.K.D.	*Z.R.I.	*Z.R.D.
---	-----------	--	-------------	---------------------	-----------	---------	---------	---------	---------



30 * 60 cm 12 * 24" P54 30 * 90 cm 12 * 36" P76 30 * 120 cm 12 * 48" P75 A= 1 cm B= 3 cm	30 * 60 cm 12 * 24" P64 30 * 90 cm 12 * 36" P61 30 * 120 cm 12 * 48" P77	8 * 60 cm 3 * 24" P34 8 * 90 cm 3 * 36" P44	8 * 30 cm 3 * 12" P55
---	--	--	-------------------------

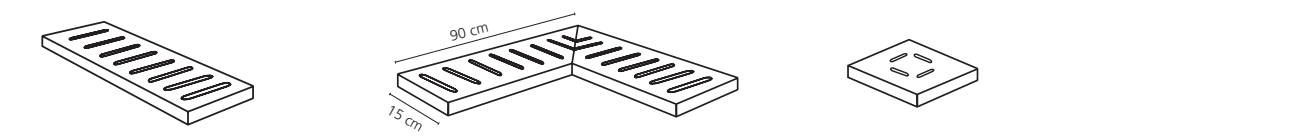
PIEZA ESPECIAL PISCINA | SPECIAL PIECE POOL

Peldaño Vierendeau Pool Coping	P.V.	Peldaño vierendeau angulo Pool Coping internal corner	ANG.P.V.	Peldaño vierendeau esquina Pool Coping external corner	E.P.V.
-----------------------------------	-------------	--	-----------------	---	---------------

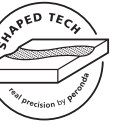


20 * 90 cm 8 * 36" P81	20 * 90 cm 8 * 36" P75 (PACK 2 units)	20 * 90 cm 8 * 36" P75 (PACK 2 units)
--------------------------	---	---

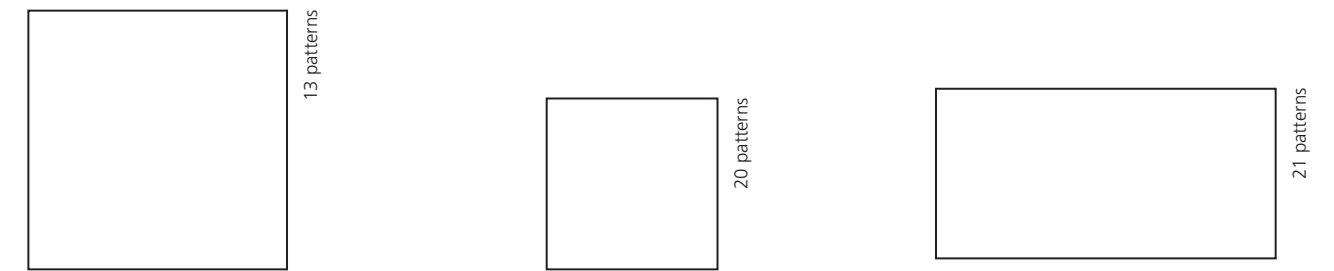
Rejilla Drainage grate	REJ.	Angulo rejilla Angle corner drainage grate	ANG.REJ.	Taco rejilla Square corner drainage grate	T.REJ.
---------------------------	-------------	---	-----------------	--	---------------



15 * 90 * 2,2 cm 6 * 36" P76	15 * 90 * 2,2 cm 6 * 36" P57 (PACK 2 units)	15 * 15 * 2,2 cm 6 * 6" P85
--------------------------------	---	-------------------------------



DOWNTOWN FLOOR



90 * 90 * 1 cm 36 * 36"			60 * 60 * 1 cm 24 * 24"		60 * 120 * 1 cm 24 * 48"	
RECTIFIED	SHAPED	ANTISLIP	RECTIFIED	SOFT	RECTIFIED	SHAPED
	BN7	BN90		BN33		BN6
ANTHRACITE	29713	30733	ANTHRACITE	29698	ANTHRACITE	29695
BEIGE	29714	30738	BEIGE	29700	BEIGE	29696
GREY	29715	30740	GREY	29699	GREY	29697
WHITE	29716	30739	WHITE	29689	WHITE	29694

CARACTERÍSTICAS TÉCNICAS | TECHNICAL CHARACTERISTICS

joint	frost proof	versatile	matt	full body	diferent shades	shade variation	various graphics

CARACTERÍSTICAS TÉCNICAS ANTIDESLIZAMIENTO | ANTI-SLIP CHARACTERISTICS

Ensayo Essay	Características Features	Resultado Result		
		SHAPED	SOFT	ANTISLIP
DIN 51130	Ángulo crítico (Pies calzados) Critical angle (footwear)	R10	R10	R11
DIN 51097	Ángulo crítico (Pies descalzados) Critical angle (Wet loaded barefoot)	A+B	A+B	A+B+C
BS 7976-2	Antideslizamiento (Test del péndulo) Slip resistance (Pendulum test-PTV)	+36 Wet	+36 Wet	+36 Wet
UNE-ENV 12633	Antideslizamiento (Test del péndulo) Slip resistance (Pendulum test)	Class 2	Class 2	Class 3
ANSI A137.1	Coefficiente de Fricción Dinámico Dynamic Coefficient of Friction (DCOF)	> 0,42	> 0,42	> 0,42
ISO 10545-6	Resistencia a la abrasión profunda/ Resistance to Deep Abrasion	< 175 mm³	< 175 mm³	< 175 mm³

EMBALAJE | PACKING

(Los pesos aquí reflejados pueden sufrir ligeras variaciones en función del lote de producción. Weights shown here may slightly vary depending on the production lot.)

Formato Sizes	Cajas Boxes			Pallet			Cont./20' 21500 kg.	Cont./20' 24000 kg.	
	Piezas	m²/ sq.m	kg	Cajas	m²/ sq.m	kg			Tamaño cm aprox.
90 * 90 * 1	2	1,62	40	22	35,64	905	105 * 95 * 75	846,7	945,15
60 * 120 * 1	2	1,44	33,18	27	38,88	920	120 * 80 * 75	908,61	1014,26
60 * 60 * 1	3	1,08	24,3	40	43,2	996	120 * 80 * 75	933	1041
inch	units	ft²	lb	Boxes	ft²	lb	Sizes Inch approx.	ft²	ft²
35 7/16 * 35 7/16 * 3/8	2	17,44	83,69	22	383,63	1.896,22	41 5/8 * 37 3/8 * 29 1/2	9.589,39	10.704,43
23 5/8 * 47 1/4 * 3/8	2	15,50	73,15	27	418,50	2.027,92	47 1/4 * 31 1/2 * 29 1/2	9.781,75	10.919,17
23 5/8 * 23 5/8 * 3/8	3	11,63	53,57	40	465	2.195,8	47 1/4 * 31 1/2 * 29 1/2	10.042,7	11.205,23

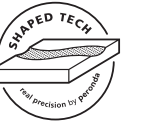
DOWNTOWN White



DOWNTOWN Beige



DOWNTOWN Grey



DOWNTOWN
White Triangle



DOWNTOWN
White Material



DOWNTOWN
Beige Triangle



DOWNTOWN
Beige Material



DOWNTOWN
Grey Triangle



DOWNTOWN
Grey Material



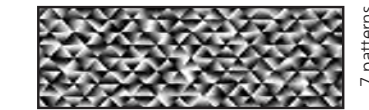
DOWNTOWN



33,3 * 100 * 0,7 cm | 13 * 39"

RECTIFIED	SHAPED
	BN8
BEIGE	29725
GREY	29724
WHITE	29723

DOWNTOWN TRIANGLE



33,3 * 100 * 0,86 cm | 13 * 39"

RECTIFIED	SHAPED
	BN10
BEIGE	29727
GREY	29726
WHITE	29728

DOWNTOWN MATERIAL



33,3 * 100 * 0,86 cm | 13 * 39"

RECTIFIED	SHAPED
	BN10
BEIGE	30754
GREY	30756
WHITE	30755

CARACTERÍSTICAS TÉCNICAS | TECHNICAL CHARACTERISTICS

joint	wall tiles	matt	diferent shades	shade variation	various graphics

EMBALAJE | PACKING

(Los pesos aquí refle ados pueden sufrir ligeras variaciones en función del lote de producción. Weights shown here may slightly vary depending on the production lot.)

Formato Sizes	Cajas Boxes			Pallet				Cont./20' 21500 kg. m2/ sq.m	Cont./20' 24000 kg. m2/ sq.m
	Piezas	m2/ sq.m	kg	Cajas	m2/ sq.m	kg	Tamaño cm aprox.		
cm									
33,3 * 100 * 0,7	6	2	26,60	24	48	663	118 * 110 * 48	1556,56	1737,56
33,3 * 100 * 0,86	5	1,67	22,20	24	40,08	558	118 * 110 * 48	1544,30	1723,87
inch	units	ft2	lb	Boxes	ft2	lb	Sizes Inch approx.	ft2	ft2
13 1/8 * 39 3/8 * 1/4	6	21,53	58,65	24	516,67	1461,92	46 7/16 * 43 5/16 * 18 7/8	16754,82	18703,06
13 1/8 * 39 3/8 * 5/16	5	17,98	48,95	24	431,42	1230,39	46 7/16 * 43 5/16 * 18 7/8	16622,86	18555,75