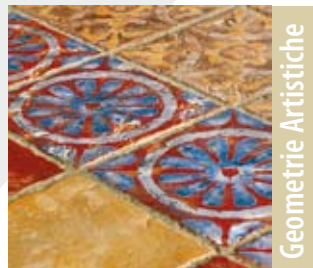




Maestri Ceramisti



Frammenti



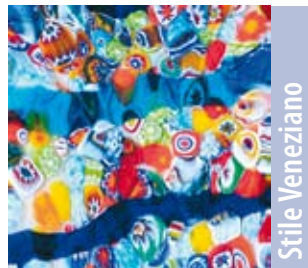
Geometrie Artistiche



Campi di Fiori



Olimpo



Stile Veneziano

Maestri Ceramisti

NOVITÀ



Maestri Ceramisti

NOVITÀ

Tra Classico e Moderno

La classicità di questo prodotto senza tempo e sempre attuale, si è arricchita con elementi di modernità quali Formelle in vetro di Murano soffiato, Formelle in vero metallo lavorato a mano nuovi elementi decorativi, Mosaico 3x3 cm e variopinto Mosaico a Frammenti.

Between Classic and Modern

Considering the classicism of this timeless and evergreen range, we have decided to enrich this collection with modern elements as Murano blown glass tiles, real hand forged metal tiles and further decorative items such as mosaics in 3x3 and colorful fragmented mosaics.

Entre Classique et Moderne

En considérant le style classique de cette collection toujours actuelle et non liée à la mode du moment, on a décidé de l'enrichir avec des éléments de modernité tels que des pièces spéciales en verre soufflé de Murano, des pièces spéciales en vrai métal travaillé à la main ainsi que des éléments décoratifs nouveaux, des mosaïques 3x3 cm et de la mosaïque bariolée en opus.

Zwischen Klassik und Moderne

Diese Kollektion hat sich als so klassisch, zeitlos und immer aktuell erwiesen, dass wir beschlossen haben, sie mit modernen Elementen zu bereichern, und zwar mit Formstücken aus geblasenem Murano-Glas, Formstücken aus echtem, handbearbeitetem Metall, neuen Dekoren, Mosaik im Format 3x3 und buntem Bruchmosaik.

Между классикой и современностью

Учитывая актуальность этого изделия, было принято решение расширить коллекцию плиткой из Муранского стекла, с применением металла ручной работы, новыми декоративными элементами, мозаикой 3x3 и разноцветной мозаикой из кусочков.

La collezione Maestri ceramisti si ispira al fascino misterioso dei pavimenti del palazzo di Avignon, risalente al XIV secolo, l'epoca in cui per la prima ed unica volta il soglio pontificio lasciò Roma. Per adeguare la sede papale alla solennità del ruolo furono chiamati i migliori artigiani d'Europa, tra i quali molti Maestri Ceramisti italiani. Eco Ceramica ha ricreato quell'atmosfera ricca di storia, riproponendola con una serie ceramica unica per stile e cultura. Sviluppata nel formato 20x20 cm e 10x10 cm, i Maestri Ceramisti si propongono in dieci colori e otto decori, cromaticamente abbinabili per composizioni di posa sempre originali e personali. La superficie strutturata ed irregolare, lo smalto prezioso e stonizzato ricreano il fascino di una ceramica proveniente direttamente dalla Storia, ma adatta per i pavimenti e le pareti di tutta la casa.

The Maestri Ceramisti series was inspired by the mysterious fascination of floors in the Palace of Avignon, built in the 14th century, when the papal throne left Rome for the first and only time. In order to make the Pope's residence suitable for solemnity of the role, the best craftsmen in Europe were called, and among them also many Italian Master Ceramists. Eco Ceramica re-creates today that historical atmosphere, and offers it through a stylistically and culturally unique ceramic series. Developed in the 20x20 cm and 10x10 cm size, the Maestri Ceramisti series is available in ten colours and many ornaments that can be chromatically combined to obtain always original and personal laying compositions. The structured and uneven surface, the precious glaze re-create the charm of ceramics originating directly from History that are suitable for floors and walls of the whole house.

La collection Maestri Ceramisti a été inspirée par le charme mystérieux du Palais d'Avignon, érigé au XIV^{ème} siècle, l'époque où le Saint Siège a abandonné Rome pour la première et seule fois. Afin de rendre la résidence papale appropriée à la solennité du rôle, on avait appelé les meilleurs artisans de l'Europe, parmi lesquels il y avait aussi plusieurs Maîtres Céramistes italiens. Eco Ceramica reproduit aujourd'hui l'atmosphère historique de l'époque, et vous permet de la goûter en vous offrant une collection céramique unique pour son contenu stylistique et culturel. Réalisée dans les formats 20x20 cm et 10x10 cm, la collection Maestri Ceramisti est disponible en dix couleurs et huit décors chromatiquement assemblables pour obtenir des compositions de pose toujours originales et individuelles. La surface structurée et irrégulière, l'émail précieux et nuancé reproduisent le charme d'une céramique qui vient directement de l'Histoire, mais qui est indiquée pour les sols et les murs de toute pièce dans la maison.

Für die Serie Maestri Ceramisti ließen wir uns durch den geheimnisvollen Zauber der Böden vom Palast Avignon anregen, der im 14. Jahrhundert gebaut wurde, in der Epoche wo der Päpstliche Stuhl für das erste und einzige Mal Rom verließ. Um den Heiligen Sitz an die Feierlichkeit der Rolle anzupassen, wurden die besten Handwerker Europas bestellt, darunter viele italienische Keramikmeister (die Maestri Ceramisti). Eco Ceramica schafft heute jene geschichtreiche Stimmung wieder und bietet sie mit einer stilistisch und kulturell einmaligen Fliesenserie. Die Serie Maestri Ceramisti ist in 10 Farben und in den Formaten 20x20 und 10x10 erhältlich und von 8 Dekoren ergänzt, die zur Erschaffung immer origineller und individueller Gestaltungen chromatisch kombiniert werden können. Die strukturierte und unregelmäßige Oberfläche, die wertvolle und nuancierte Glasur schaffen den Zauber einer Keramik wieder, die direkt aus der Geschichte kommt, doch sich für die Böden und Wände im ganzen Haus eignet.

Коллекция Maestri ceramisti также загадочна и мистериозна как и обстановка замка Авиньон, относящегося к XIV веку. Это была эпоха, когда в первый и единственный раз Папский престол покинул Рим. Чтобы придать праздность и величественность новой Папской резиденции были созваны самые лучшие мастера со всей Европы, в том числе и итальянские мастера - керамисты (так называемые Maestri ceramisti). Eco Ceramica, предложив уникальную по стилю и культуре серию, воссоздала богатую историей атмосферу того времени. Разработанная в формате 20x20 см, 10x10 см. коллекция Maestri ceramisti предлагается в десяти цветах и восьми декорах, свободно сочетающихся между собой в самых оригинальных комбинациях. Структурная поверхность, дорогая глазурь и неоднородность оттенков, передающих дух того времени, создали серию, идеально подходящую для отделки и облицовки Вашего дома.



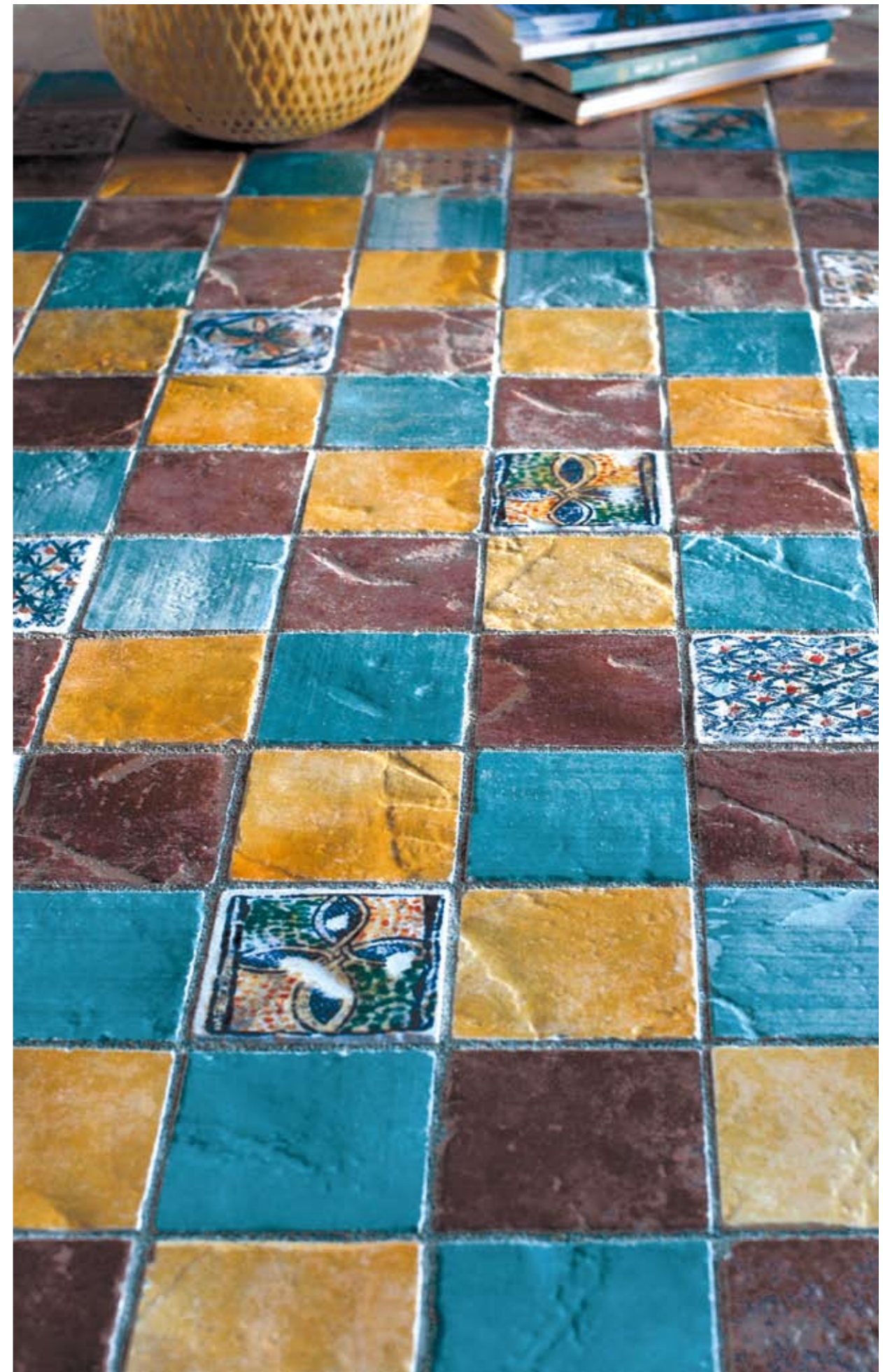


MAESTRI CERAMISTI 10X10 CM – 4"X4" / DERUTA, DA ORVIETO, VENETI, D101, D102, D103, D104
MAESTRI CERAMISTI 20X20 CM – 8"X8" / SENESI





MAESTRI CERAMISTI 10X10 CM – 4"X4" / DERUTA, DA ORVIETO, VENETI, D102, D103, D104
 MAESTRI CERAMISTI 20X20 CM – 8"X8" / SENESI



MAESTRI CERAMISTI 10X10 CM – 4"X4" / DERUTA, DA ORVIETO, VENETI, D101, D102, D103, D104





MAESTRI CERAMISTI 10X10 CM – 4"X4" / FAENTINI, DERUTA, FIORENTINI, URBINATI, SENESI, DA ORVIETO, VENETI, UMBRI, DA MANTOVA, VITERBESI, D101, D102, D103, D104
 MAESTRI CERAMISTI 20X20 CM – 8"X8" / DA MANTOVA, QUADRIFOGLIO



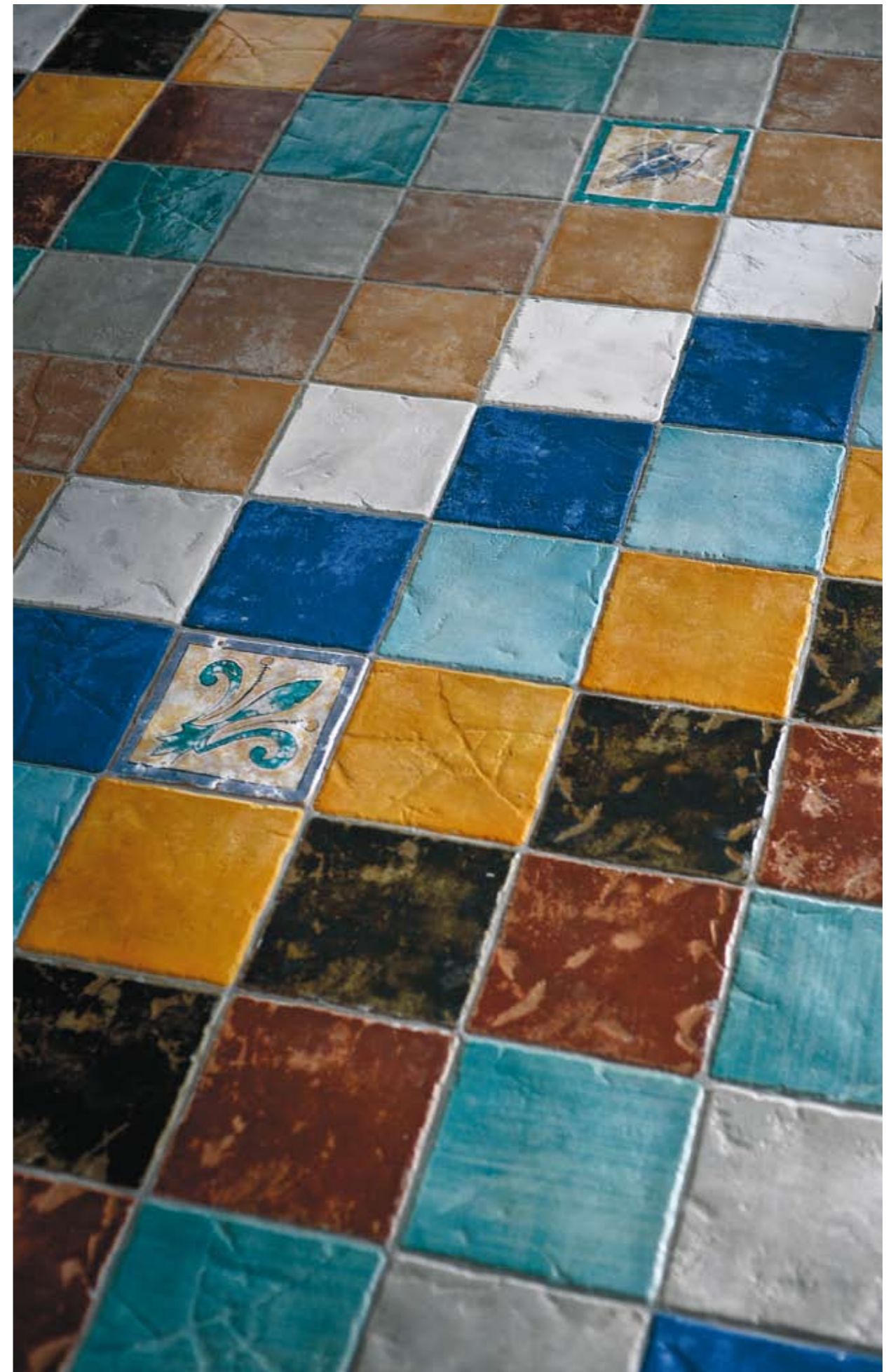


Maestri Ceramisti

Maestri Ceramisti 20x20 cm / 8" x 8" - 10x10 cm / 4" x 4"

MAESTRI CERAMISTI 20X20 CM – 8"X8" / FAENTINI, DERUTA, FIORENTINI, URBINATI, SENESI, DA ORVIETO, VENETI, UMBRI, DA MANTOVA, VITERBESI, DIAGONALI, COLOMBA, GIGLIO, PESCE



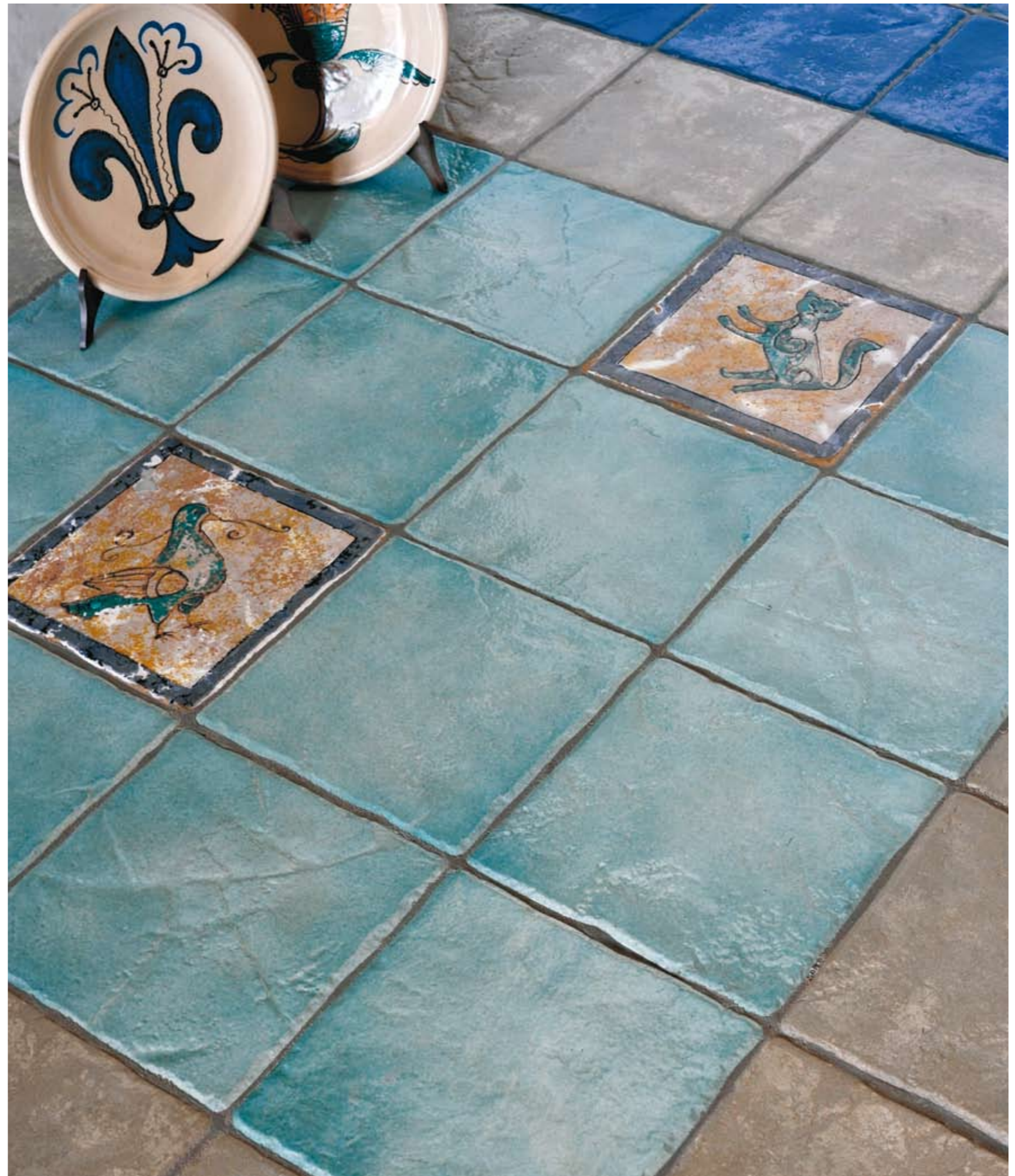


MAESTRI CERAMISTI 20X20 CM – 8"X8" / FAENTINI, DERUTA, FIORENTINI, URBINATI, SENESI, DA ORVIETO, VENETI, UMBRI, DA MANTOVA, VITERBESI, COLOMBA, GIGLIO, PESCE





MAESTRI CERAMISTI 20X20 CM – 8"X 8" / DA MANTOVA, DA ORVIETO, DERUTA, PESCE



MAESTRI CERAMISTI 20X20 CM – 8"X8" / URBINATI, FAENTINI, FIORENTINI, GATTO, COLOMBA





Maestri Ceramisti

Maestri Ceramisti 20x20 cm / 8" x 8" - 10x10 cm / 4" x 4"

MAESTRI CERAMISTI 20X20 CM – 8"X8" / DERUTA, VENETI, QUADRA





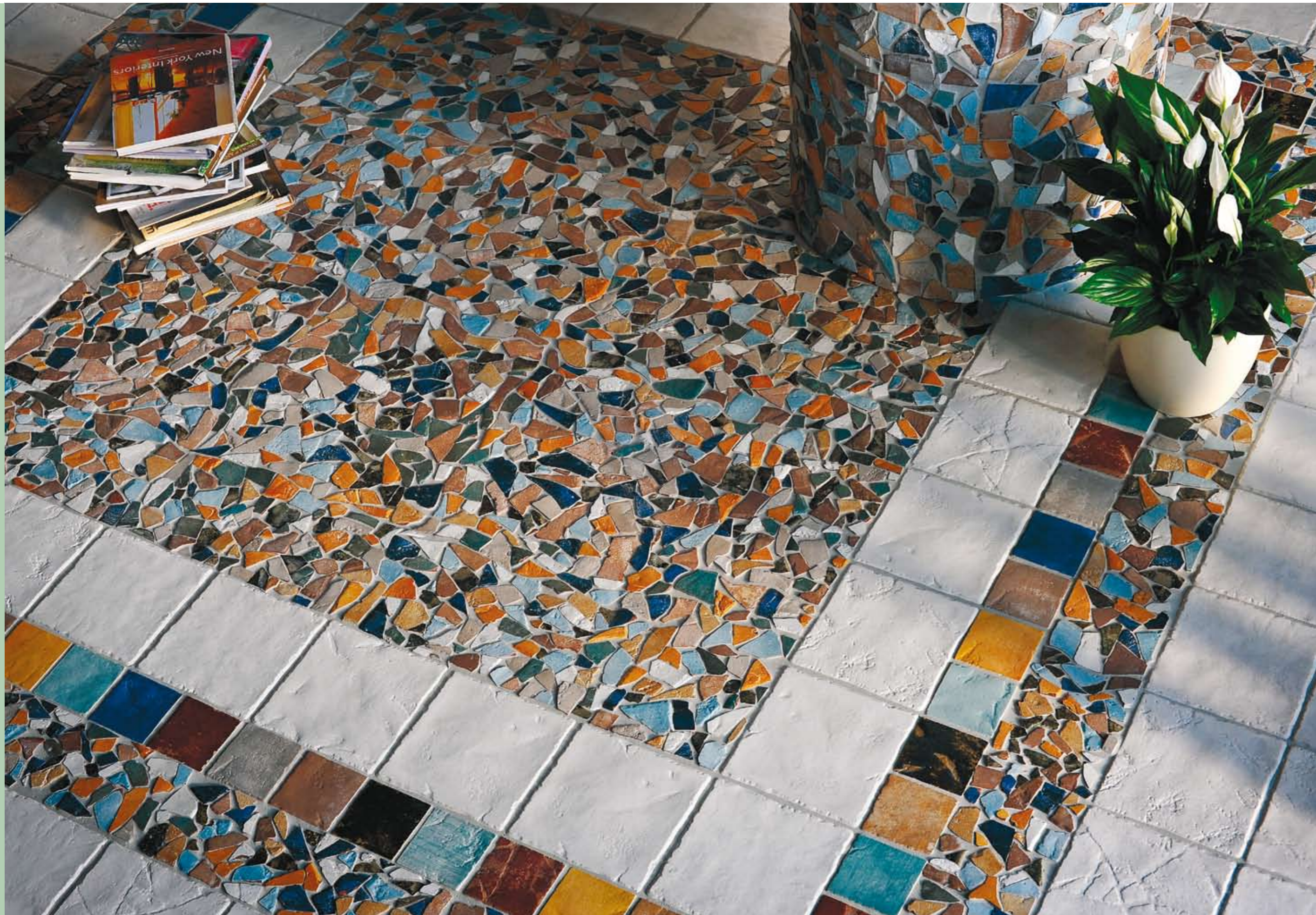
Maestri Ceramisti

Maestri Ceramisti 20x20 cm / 8" x 8" - 10x10 cm / 4" x 4"

MAESTRI CERAMISTI 20X20 CM - 8" X 8" / DA MANTOVA, FIORENTINI, SENESI, COLOMBA, DIAGONALI, GATTO, PESCE





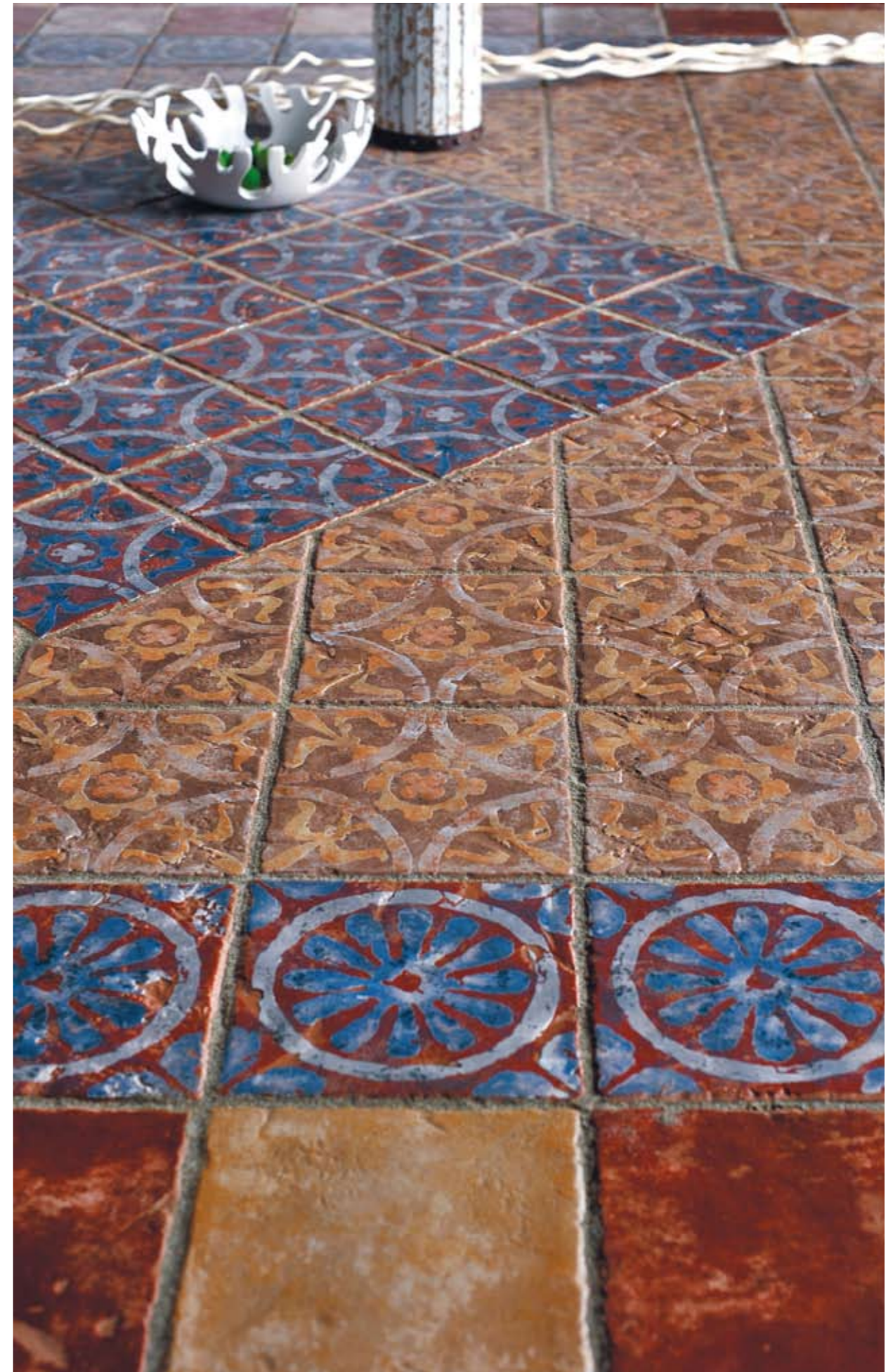


Maestri Ceramisti

Maestri Ceramisti / Frammenti

MAESTRI CERAMISTI 10X10 CM – 4"X4" / FAENTINI, DERUTA, FIORENTINI, URBINATI, SENESI, DA ORVIETO, VENETI, UMBRI, VITERBESI
MAESTRI CERAMISTI 20X20 CM – 8"X8" / DA MANTOVA
MAESTRI CERAMISTI FRAMMENTI 40X40 CM – 16"X16"





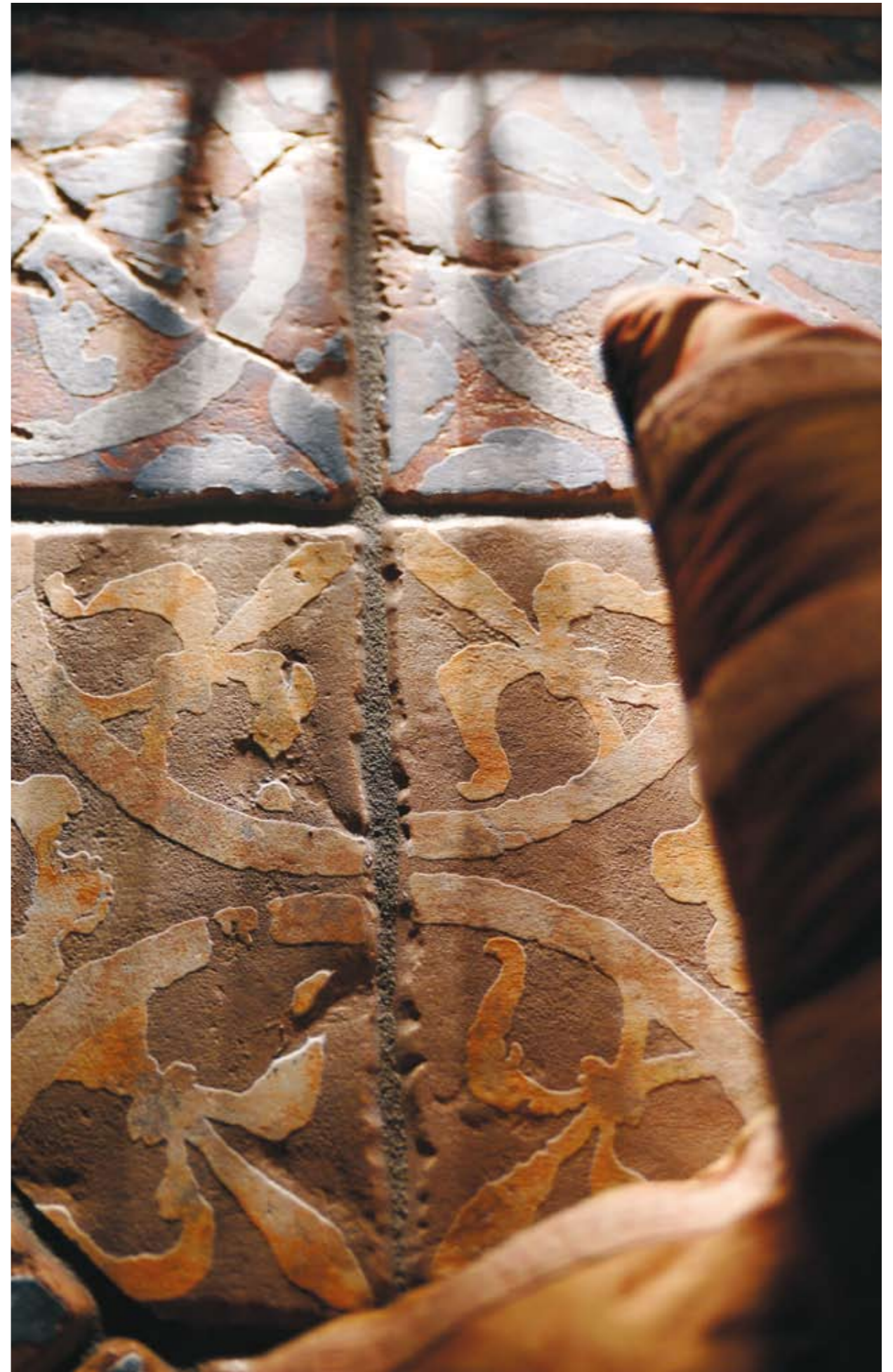
MAESTRI CERAMISTI 20X20 CM – 8"X 8" / VENETI , DERUTA , SENESI
 GEOMETRIE ARTISTICHE 20X20 CM – 8"X 8" / ARCHI GIALLI, CERCHIO AZZURRO, ARCHI AZZURRO





MAESTRI CERAMISTI 20X20 CM - 8"X 8" / VENETI, DERUTA, SENESI
GEOMETRIE ARTISTICHE 20X20 CM - 8"X 8" / ARCHI GIALLI, CERCHIO AZZURRO, ARCHI AZZURRO





GEOMETRIE ARTISTICHE 20X20 CM – 8"X 8" / CERCHIO GIALLO, ARCHI GIALLI, CERCHIO AZZURRO, ARCHI AZZURRO



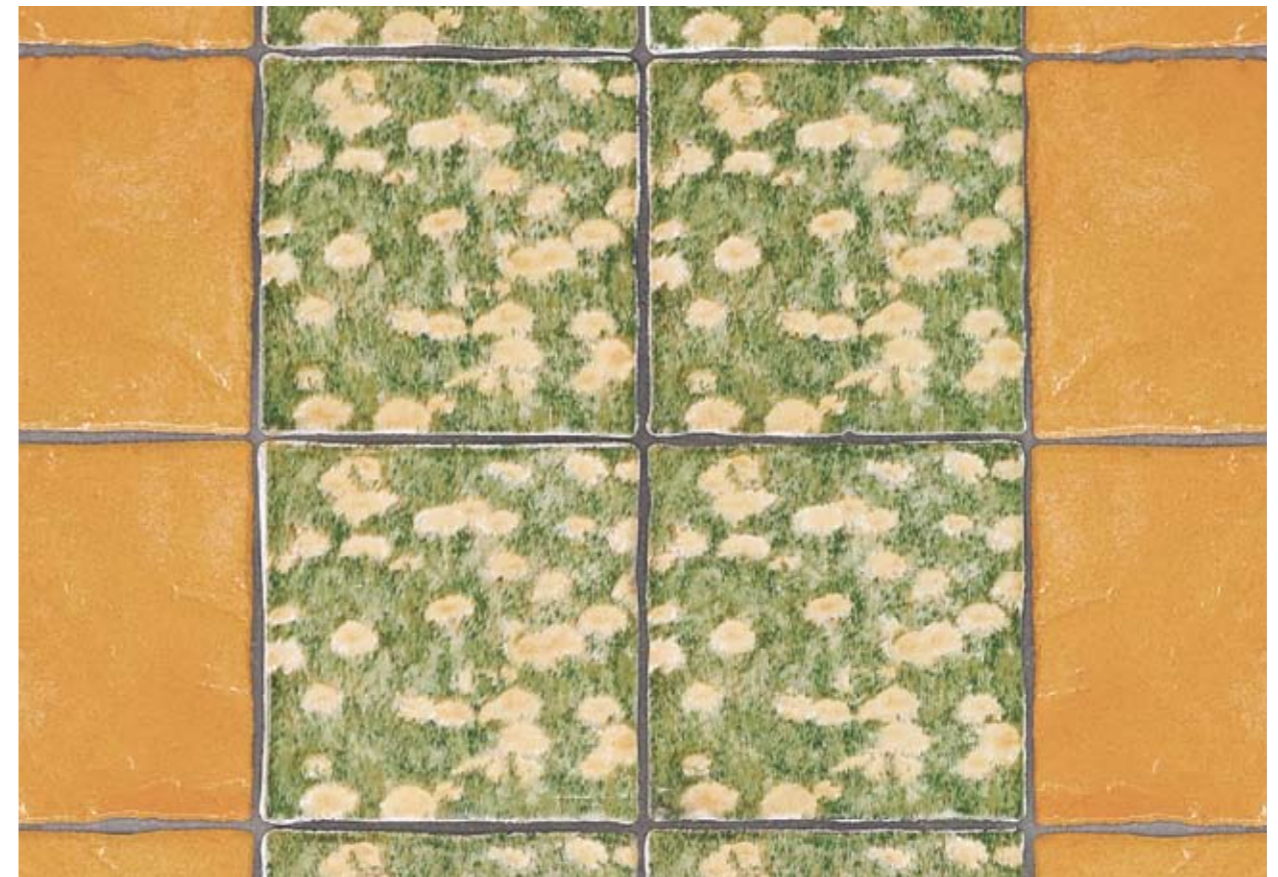


MAESTRI CERAMISTI MOSAICO 3X3 CM – 1,2"X 1,2" / DA MANTOVA , VITERBESI
 CAMPI DI FIORI 20X20 CM – 8"X 8" / FIORITURA BIANCA, FIORITURA VIOLA, FIORITURA ROSSA, FIORITURA GIALLA





MAESTRI CERAMISTI 20X20 CM – 8"X 8" / FAENTINI
 CAMPI DI FIORI 20X20 CM – 8"X 8" / FIORITURA ROSSA



MAESTRI CERAMISTI 20X20 CM – 8"X 8" / DERUTA
 CAMPI DI FIORI 20X20 CM – 8"X 8" / FIORITURA GIALLA

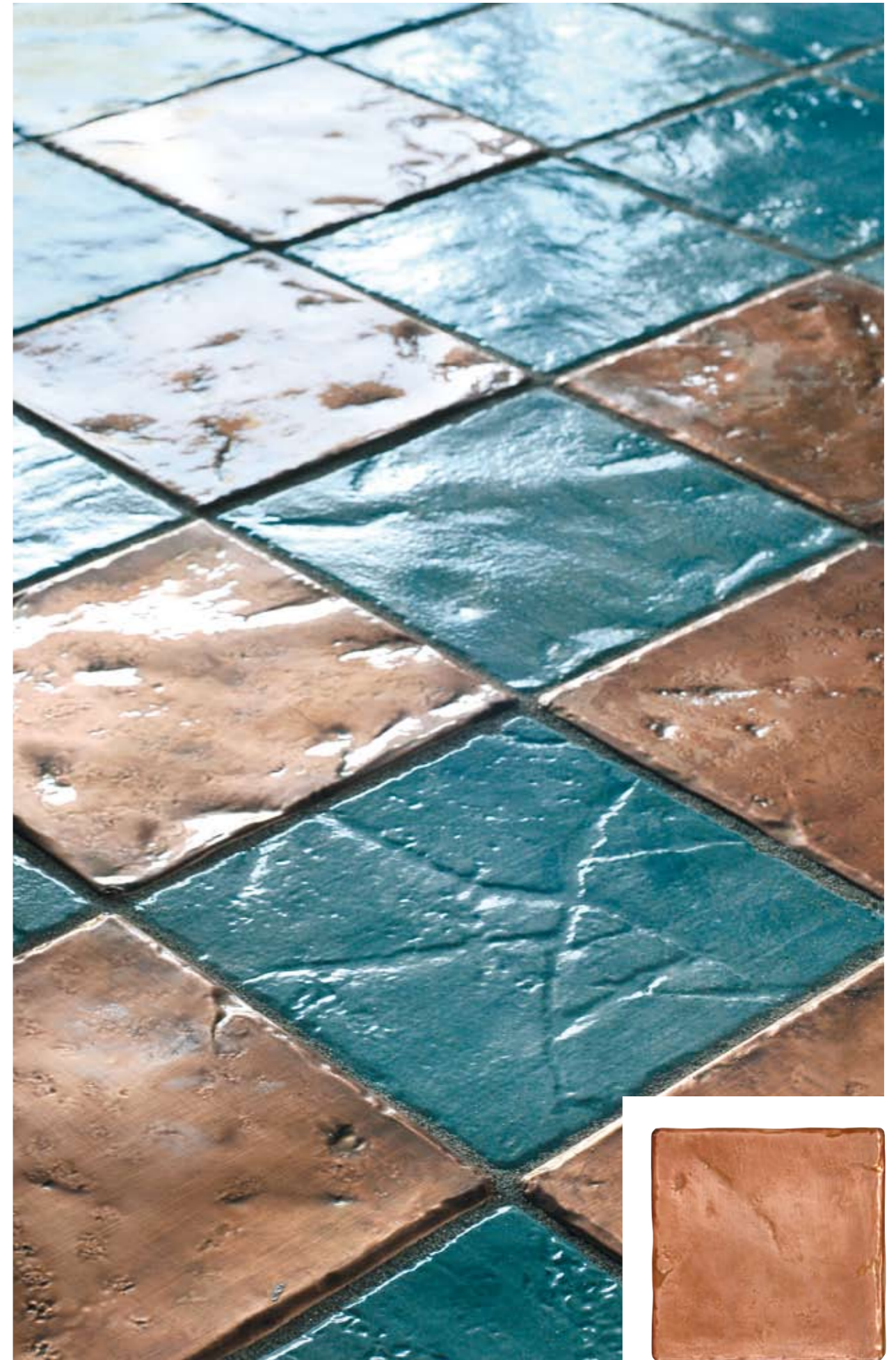


MAESTRI CERAMISTI 20X20 CM – 8"X 8" / DA ORVIETO
 CAMPI DI FIORI 20X20 CM – 8"X 8" / FIORITURA BIANCA



MAESTRI CERAMISTI 20X20 CM – 8"X 8" / FIORENTINI
 CAMPI DI FIORI 20X20 CM – 8"X 8" / FIORITURA VIOLA





MAESTRI CERAMISTI 20X20 CM – 8"X 8" / DA ORVIETO
AUTENTICA - OLIMPO 20X20 CM – 8"X 8" / URANO

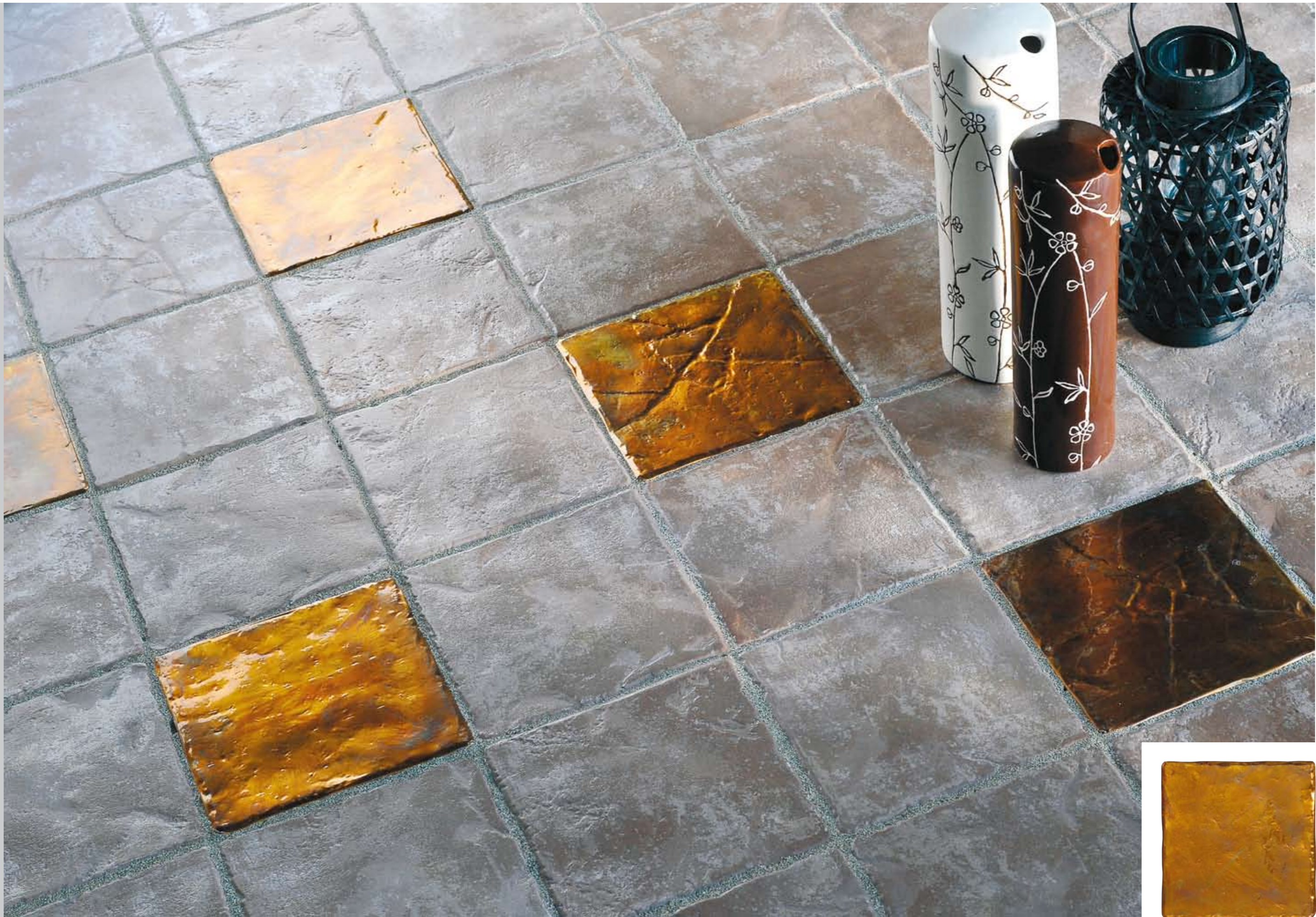
OLIMPO 20X20 CM – 8"X 8" / URANO





MAESTRI CERAMISTI MOSAICO 3X3 CM – 1,2"X 1,2" / URBINATI
 MAESTRI CERAMISTI 20X20 CM – 8"X 8" / DA MANTOVA
 AUTENTICA - OLIMPO 20X20 CM – 8"X 8" / APOLLO

OLIMPO 20X20 CM – 8"X 8" / APOLLO



Maestri Ceramisti

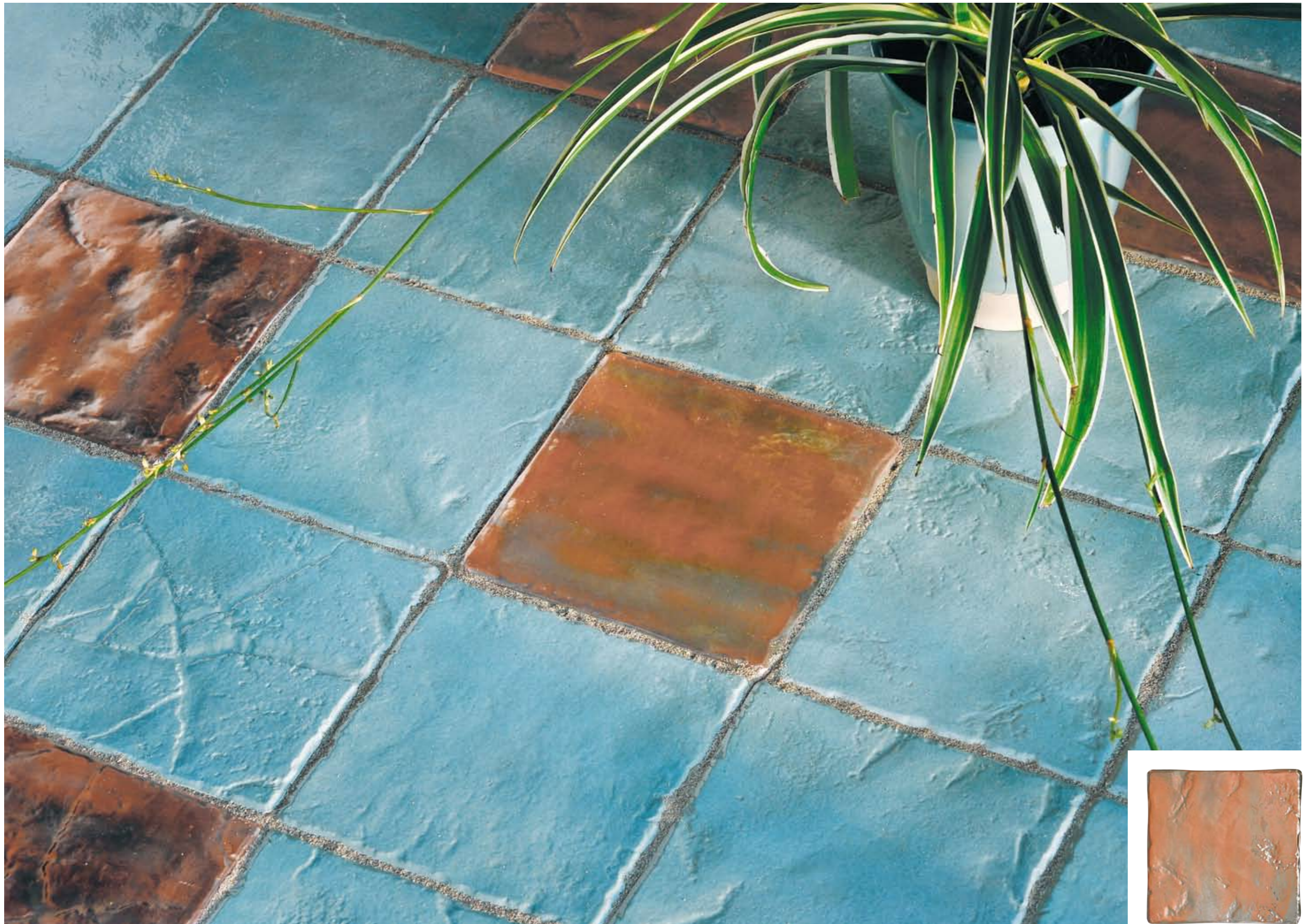
Maestri Ceramisti / Olimpo

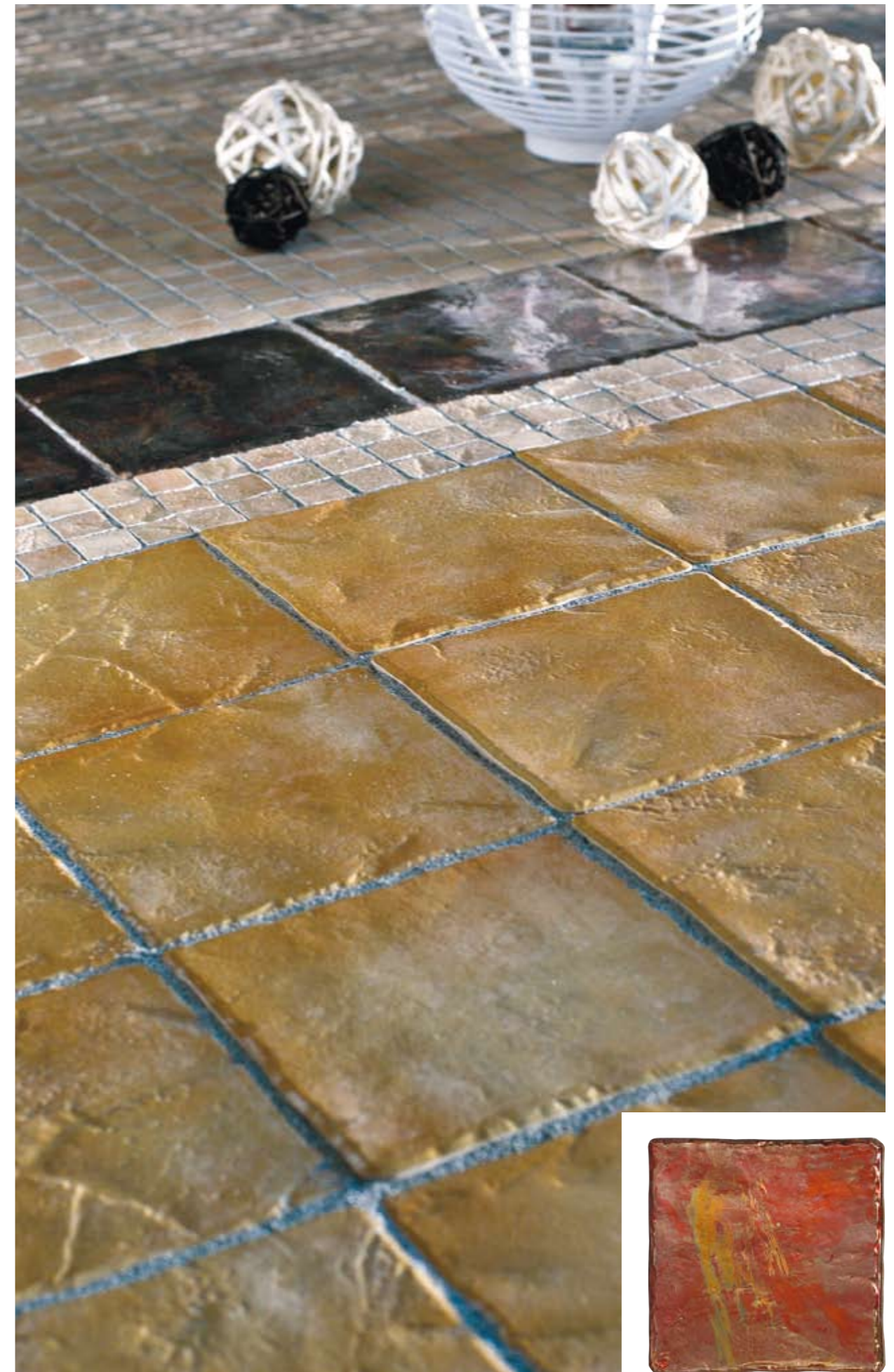
MAESTRI CERAMISTI 20X20 CM – 8"X 8" / SENESI
AUTENTICA - OLIMPO 20X20 CM – 8"X 8" / DIONISIO



OLIMPO 20X20 CM – 8"X 8"
DIONISIO



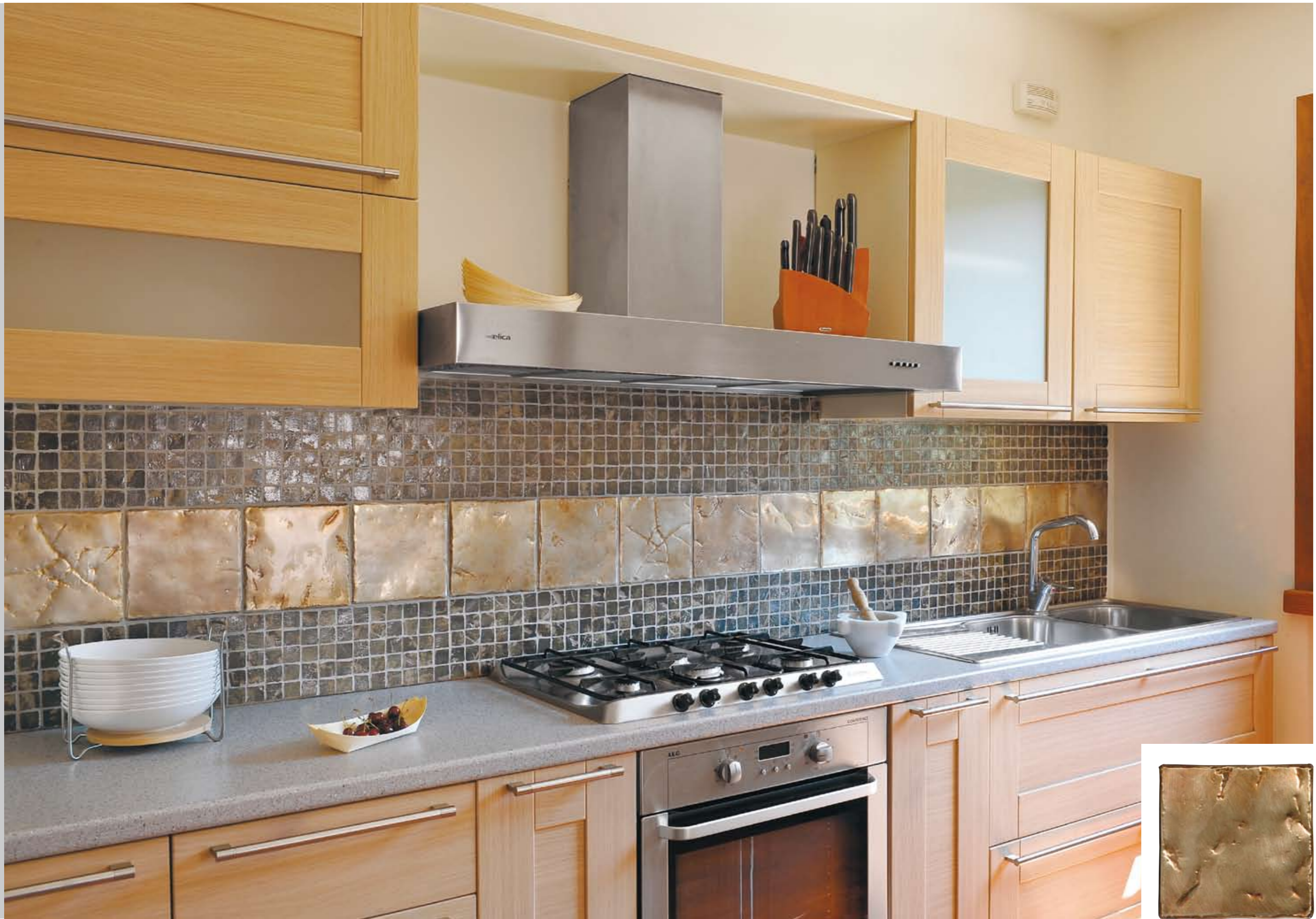




MAESTRI CERAMISTI MOSAICO 3X3 CM – 1,2"X 1,2" / DERUTA, MAESTRI CERAMISTI 20X20 CM – 8"X 8" / DERUTA AUTENTICA - OLIMPO 20X20 CM – 8"X 8" / MARTE

OLIMPO 20X20 CM – 8"X 8" / MARTE

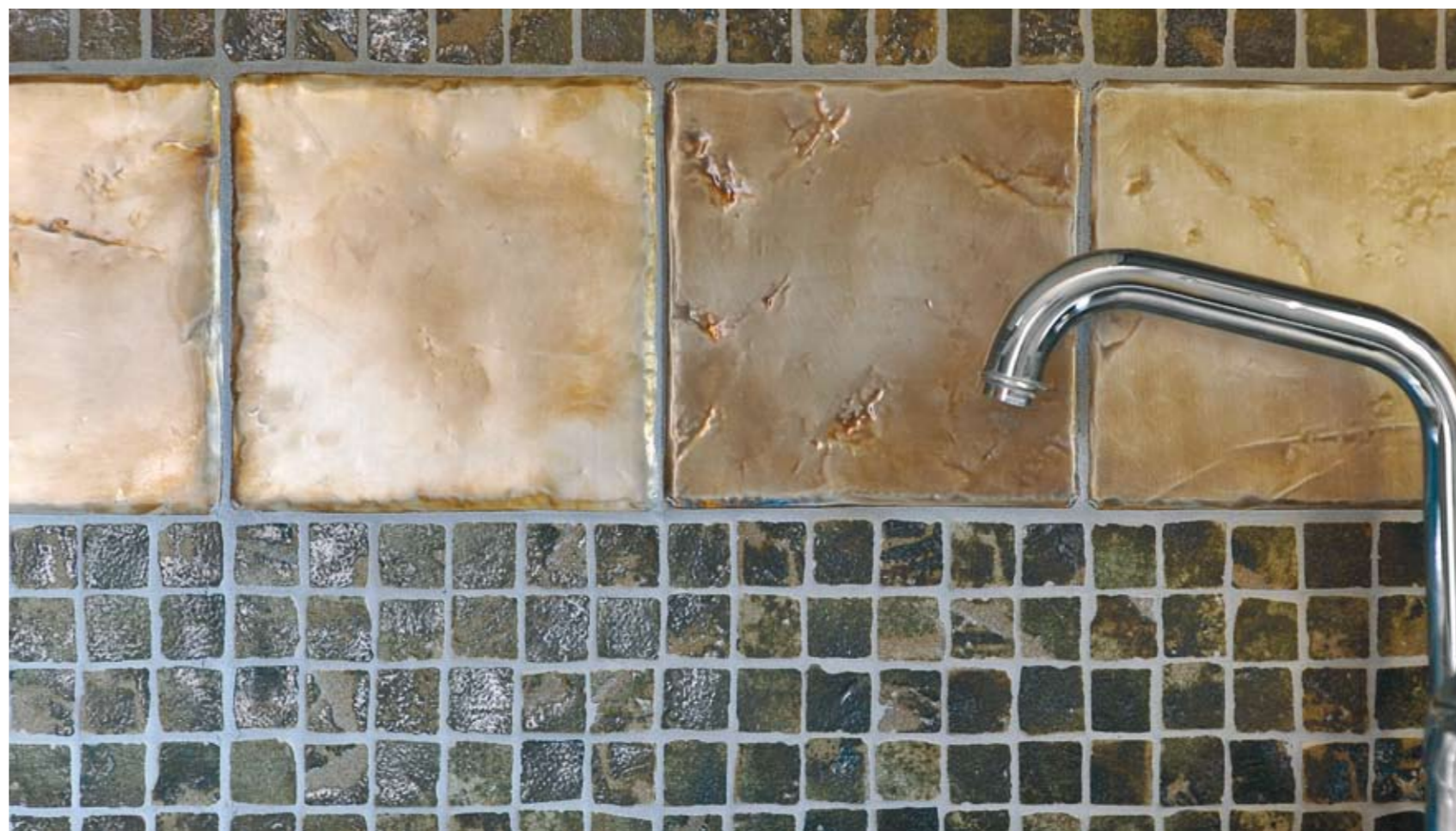




MAESTRI CERAMISTI MOSAICO 3X3 CM – 1,2"X 1,2" / VITERBESI
 AUTENTICA - OLIMPO 20X20 CM – 8"X 8" / POSEIDONE

OLIMPO 20X20 CM – 8"X 8"
 POSEIDONE





MAESTRI CERAMISTI MOSAICO 3X3 CM - 1,2"X 1,2" / VITERBESI
AUTENTICA - OLIMPO 20X20 CM - 8"X 8" / POSEIDONE





MAESTRI CERAMISTI 10X10 CM – 4"X 4" / FAENTINI, FIORENTINI
 MAESTRI CERAMISTI 20X20 CM – 8"X 8" / FIORENTINI
 STILE VENEZIANO 20X20 CM – 8"X 8" / MURRINE MULTICOLOR



STILE VENEZIANO 20X20 CM – 8"X 8"
 MURRINE MULTICOLOR





STILE VENEZIANO 20X20 CM – 8"X 8"
ARGENTO MURANO



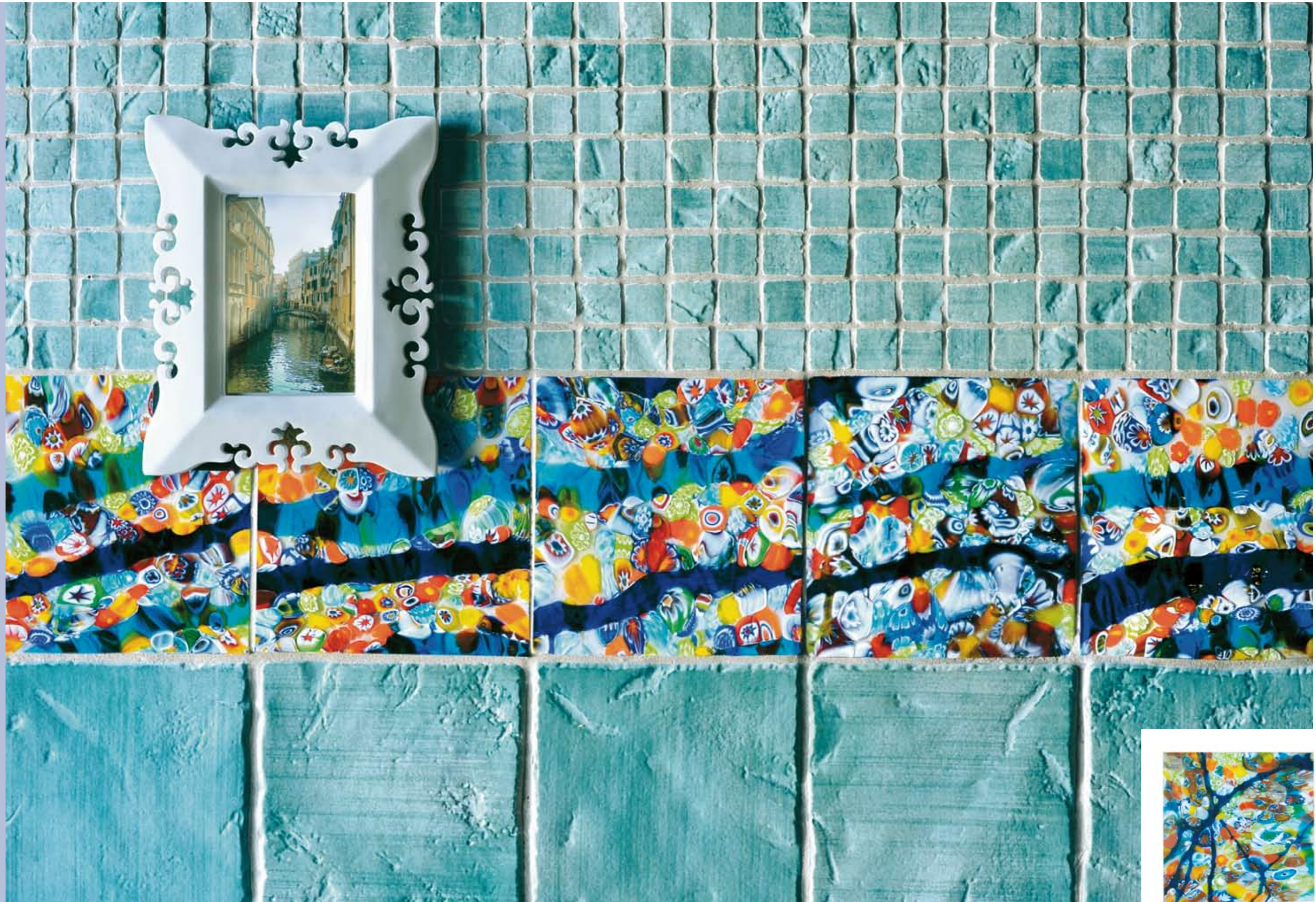
MAESTRI CERAMISTI MOSAICO 3X3 CM – 1,2"X 1,2" / URBINATI
MAESTRI CERAMISTI 20X20 CM – 8"X 8" / URBINATI
STILE VENEZIANO 20X20 CM – 8"X 8" / ARGENTO MURANO



STILE VENEZIANO 20X20 CM – 8"X 8"
ORO MURANO

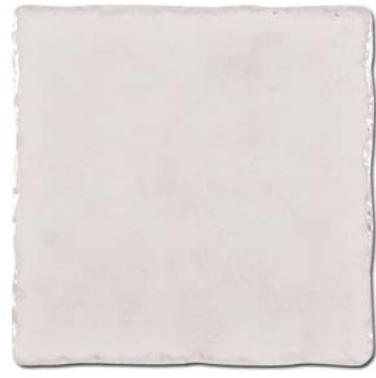
MAESTRI CERAMISTI MOSAICO 3X3 CM – 1,2"X 1,2" / DERUTA, DA ORVIETO
STILE VENEZIANO 20X20 CM – 8"X 8" / ORO MURANO







Faentini



Da Mantova



Senesi



Da Orvieto



Deruta



Umbri



Viterbesi



Veneti



Urbinati



Fiorentini



Giglio



Intreccio



Colomba



Diagonali



Gatto



Quadra

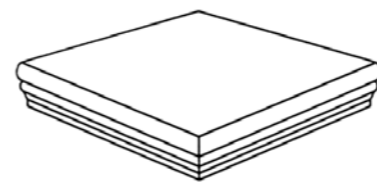


Pesce

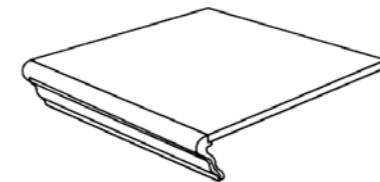


Quadrifoglio

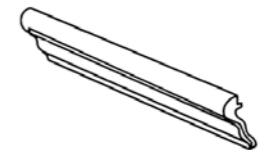
Maestri Ceramisti - Pezzi Speciali / Special Tiles



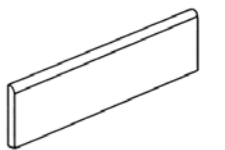
Angolare



Gradino



Torello

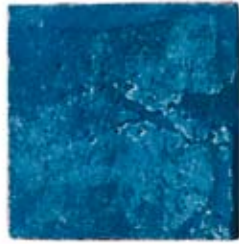


Battiscopa

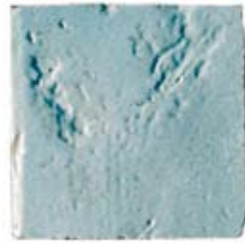


Maestri Ceramisti 10 x 10 cm / 4" x 4"

Tagliato e burattato / Cutted and Tumbled / Coupé, aux bords adoucis / Geschnitten und getrommelt
НАРЕЗАННЫЙ И С ОТБИТЫМИ КРАЯМИ (С ПОСЛЕДУЮЩЕЙ ОБРАБОТКОЙ КРАЁВ В ЦЕНТРИФУГЕ ДЛЯ КЕРАМИЧЕСКОЙ ПЛИТКИ)



Faentini



Fiorentini



Senesi



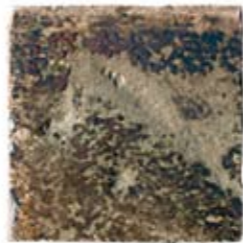
Urbinati



Deruta



Da Orvieto



Viterbesi



Veneti



Umbri



Da Mantova



D 101



D 102



D 103



D 104

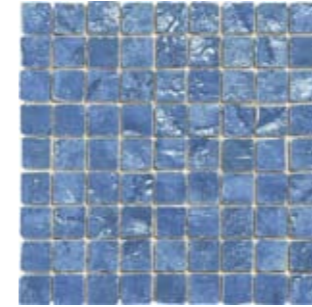
Maestri Ceramisti - Frammenti 40 x 40 cm / 16" x 16"

Frammenti spaccati, burattati e ricomposti su rete / Fragments cassés, aux bords adoucis, collés sur filet / Broken and tumbled
Bruch, getrommelt und auf Netz geklebt / ОТЛОМЛЕННЫЕ КУСОЧКИ С ОТБИТЫМИ КРАЯМИ С ПОСЛЕДУЮЩЕЙ УКЛАДКОЙ НА СЕТКЕ



Maestri Ceramisti - Mosaico 3 x 3 cm / 1,2" x 1,2" - Su rete 30 x 30 cm / 12" x 12"

Inciso, spaccato e burattato / Engraved, broken and tumbled / Précoupé, cassé, aux bords adoucis / Vorgeschnitten, gebrochen und getrommelt
НАДРЕЗАННЫЙ, НАДЛОМЛЕННЫЙ И С ОТБИТЫМИ КРАЯМИ (СНАЧАЛА ПРОИЗВЕДЁН ПРЕДВАРИТЕЛЬНЫЙ НАДРЕЗ, ПОТОМ НАДЛОМ С ПОСЛЕДУЮЩЕЙ ОБРАБОТКОЙ КРАЁВ В ЦЕНТРИФУГЕ ДЛЯ КЕРАМИЧЕСКОЙ ПЛИТКИ)



Faentini



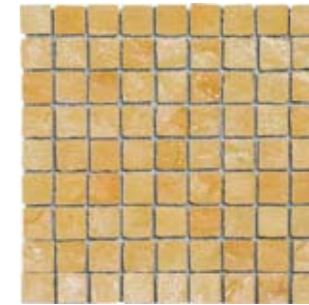
Fiorentini



Senesi



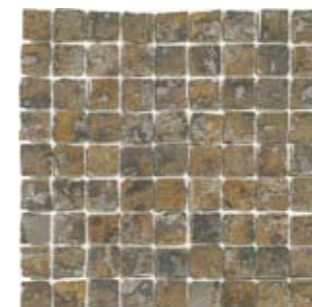
Urbinati



Deruta



Da Orvieto



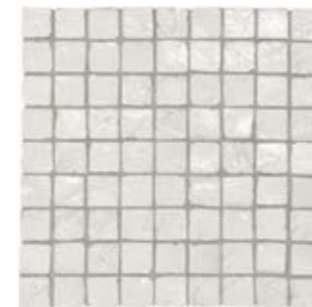
Viterbesi



Umbri



Veneti



Da Mantova



Gli Abbinamenti

Geometrie Artistiche 20 x 20 cm / 8" x 8"



Cerchio Giallo



Archi Gialli



Cerchio Azzurro



Urbinati



Campi di Fiori 20 x 20 cm / 8" x 8"



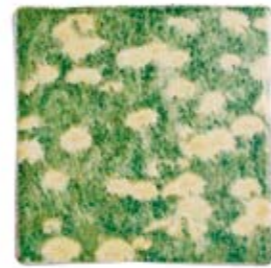
Fioritura Bianca



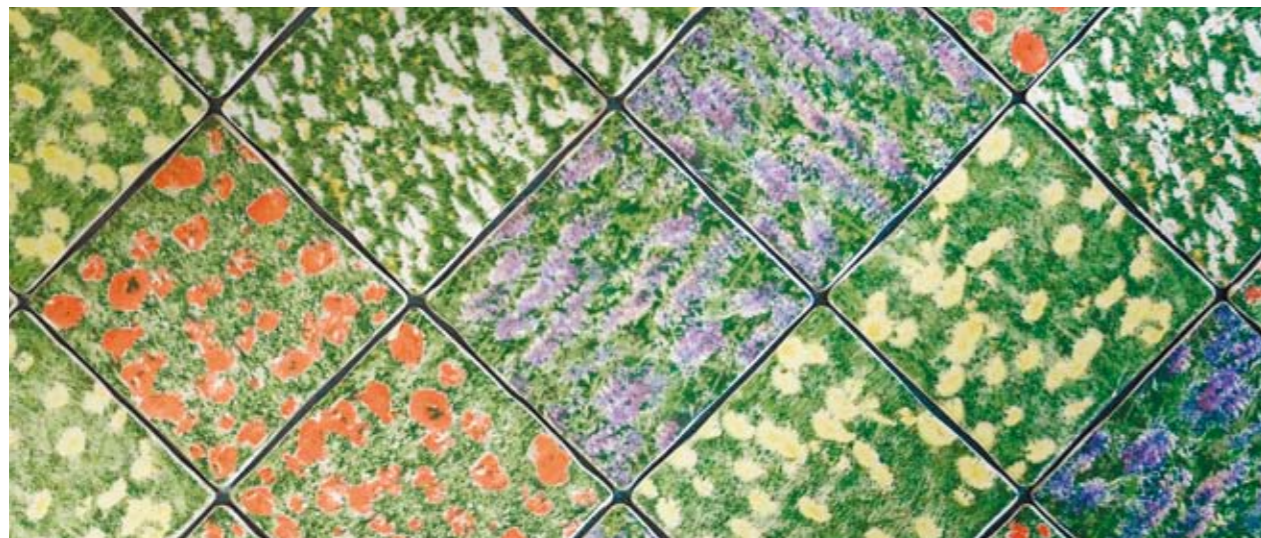
Fioritura Viola



Fioritura Rossa



Fioritura Gialla



Gli Abbinamenti

Autentica - Olimpo 20 x 20 cm / 8" x 8"

VERO METALLO FORGIATO A MANO / REAL HAND FORGED METAL / VRAI MÉTAL FORGÉ À LA MAIN / ECHTES HANDGESCHMIEDETES METALL
НАСТОЯЩИЙ МЕТАЛЛ КОВАНЫЙ ВРУЧНУЮ



Demetra



Urano



Apollo



Marte



Poseidone



Dionisio



Stile Veneziano 20 x 20 cm / 8" x 8"

VERO VETRO ARTISTICO DI MURANO (VENEZIA) / REAL ARTISTIC MURANO GLASS (VENICE) / VRAI VERRE ARTISTIQUE DE MURANO (VENISE)
ECHTES KUNSTGLAS AUS MURANO (Venedig) / НАСТОЯЩЕЕ МУРАНКОЕ СТЕКЛО (ВЕНЕЦИЯ)



Murrine Multicolor



Murrine Multicolor Vena Blu



Argento Murano



Oro Murano



Caratteristiche Tecniche / Technical Datas

Gres porcellanato smaltato - glazed porcelain tile

| Caratteristiche datas | Norma Standard | Valore Prescritto UNI EN 14411 - BI a Required value UNI EN 14411 - BI a | Dati Prodotto Product datas |
|--|----------------|--|--------------------------------|
| Spessore thickness | 10545.2 | ± 5% | 11/12 mm ± 5% |
| Assorbimento d'acqua water absorption | 10545.3 | ≤ 0,5% | ≤ 0,5% |
| Resistenza alla flessione bending strength | 10545.4 | 35 MIN 1300 MIN | 51,2 MIN |
| Resistenza all'abrasione resistance to abrasion | 10545.7 | Classe 0/5 | PEI 4/5 |
| Resistenza al gelo frost resistance | 10545.12 | Resistente Resistant | Resistente Resistant |
| Resistenza alle macchie stain resistance | 10545.14 | Classe 3 Min. | 5 |
| Resistenza ai prodotti chimici di uso domestico resistance to household chemicals | 10545.13 | GB Min. | GB |
| Resistenza all'attacco acido e basico acids and alkali resistance | 10545.13 | Secondo la classificazione indicata dal fabbricante As per the producer's internal classification | GLA / GLB |



Eco Ceramica S.p.A.
Via Don P. Borghi, 5
42013 Sant'Antonino di Casalgrande (RE)
Tel. +39 0536 991701 Fax +39 0536 990164
www.ecoceramica.com - info@ecoceramica.com